



---

KEEP AMERICA BEAUTIFUL AFFILIATE

# **WESTMORELAND CLEANWAYS AND RECYCLING**

## **RECYCLING GUIDE**

Updated as of 06/02/2017

## INTRODUCTION

Westmoreland Cleanways' recycling landscape is constantly evolving. Opportunities exist now for recycling a wide range of materials that did not exist just a few years ago. Some of the factors affecting recycling are:

- ♻️ Single Stream Recycling became widely available to the Westmoreland County market in 2007.
- ♻️ The availability of single stream processing has allowed haulers to upgrade municipal curbside recycling programs from accepting just a few items to accepting the full single stream range of recyclables. Be sure to check your municipality's program to see if curbside single stream is available to you.
- ♻️ Passage of Act 108 of 2010, the Covered Device Recycling Act (applies to computers and television) and the proper disposal of other e-waste as a growing environmental danger.
- ♻️ Much has been made of the *improper* disposal of e-waste, with cargo shipments of waste going to underdeveloped nations where the toxic byproducts end up in water systems and worse. Westmoreland Cleanways qualifies each vendor it endorses to be sure the e-waste is recycled or disposed in an environmentally secure manner.
- ♻️ The economy of recycling: Recycling is as much a business decision as it is environmental. Source reduction is becoming a preferred way of dealing with waste and reducing cost. The "Zero Waste" philosophy ... "conserves energy, mitigates climate change, reduces water usage, prevents toxics creation, and minimizes ecosystem destruction." *source EPA*
- ♻️ Recycling is no longer "free" (it actually never was, but the cost was hidden). People are making a conscious choice to recycle. It is the right thing to do, a way to conserve our natural resources, and eliminate hazards from our environment.
- ♻️ Recycling can be a wise economic decision if the cost of throwing something away exceeds the cost of recycling. Proper waste management, from waste reduction to recycling, is a great way to reduce operating cost when every dollar counts.

Zero Waste, Sustainability, Extended Producer Responsibility ... these philosophies continue to drive the recycling and waste management landscape. The recycling industry continues to evolve to meet the demands of people who are no longer willing to settle for "it can't be done." New markets are developing to use recycled content material; improved technology results in cleaner processing, which makes recyclables more valuable; and, more businesses are finding solutions to make the waste management industry more responsive and sustainable.

This Recycling Guide lists opportunities to recycle or properly dispose of everything from plastic bottles to thermometers to used cooking oil. It is comprehensive, but no doubt some opportunities will be missed that would make the guide complete. We make every effort to stay abreast of the evolving recycling world, to anticipate new trends, to educate consumers and businesses on new recycling laws and opportunities, and to develop new programs to meet the environmental and disposal needs of our residents.

Feel free to contact us with questions or opportunities that aren't listed or should be listed in future editions.

Ellen C. Keefe, Executive Director

Natalie Reese, Program Director

## WESTMORELAND CLEANWAYS AND RECYCLING

### RECYCLING GUIDE

Page 4	<b>Westmoreland Cleanways Recycling Center</b>
Page 5	Quick Reference Guide
Page 12	Westmoreland County Waste and Recycling Haulers
Page 13	Waste and Recycling Resource Managers
Page 14	Westmoreland County Transfer Stations and Landfills
Page 16	Material Recovery Facilities (MRFs)
Page 17	Specialized Recycling Transportation and Disposal Services
Page 21	Curbside Municipal Recycling Programs
Page 27	Public Drop-off Recycling Programs
Page 31	Drug Disposal: MedReturn Collection Sites
Page 33	Electronics Recycling Options
Page 34	Curbside E-waste and Household Hazardous Waste Collection (limited to specific municipalities)
Page 35	Paper Recycling: Royal Oak Retriever Locations
Page 40	Drop-off Businesses

### GOOD TO KNOW – RECYCLING TIDBITS

Page 51	Recycling Definitions
Page 54	Disposing of General Purpose and Alkaline Batteries
Page 55	Plastic Resin Codes
Page 56	How to Properly Dispose of Latex and Oil-Based Paint
Page 57	Websites of Interest

**Back Cover** Westmoreland Cleanways and Recycling – What We're All About  
Membership Information

*\*Listing in this Guide does not constitute an endorsement by Westmoreland Cleanway and Recycling. Omission from this guide is not a negative reflection on a business.*

*\*\*The recycling industry is fluid and constantly changing. Please notify us if a new recycling opportunity becomes available so it can be incorporated into future editions.*

*\*\*\*Every attempt has been made to verify the information in this guide. Call a business directly if you have any questions about their services. Please notify us if a listing is not correct or should be updated.*



# WESTMORELAND CLEANWAYS RECYCLING CENTER

**GPS Address:** 113 Innovative Lane,  
Latrobe, PA 15650-5462 (Building F)  
724-879-4020

[info@westmorelandcleanways.org](mailto:info@westmorelandcleanways.org)

**HOURS:** Mondays Noon—5 p.m.  
Wednesdays 8 a.m.—1 p.m.  
Fridays 8 a.m.—1 p.m.

2nd Sat. of each Month, 8:30 a.m.—Noon

<b>ELECTRONICS</b>	
Electronics (batteries removed)	NO CHARGE
Stripped TV Tubes	\$25.00
<b>Electronics Collection Suspended until further notice</b>	
<b>PAPER</b>	
Paper as listed (please separate):	NO CHARGE
Cardboard ( <i>corrugated, chip board, cereal boxes</i> )	
Sorted Office Paper ( <i>white; staples and paperclips OK</i> )	
Mixed paper ( <i>file folders, junk mail, magazines, phone books</i> )	
Newspaper ( <i>black and white, inserts</i> )	
<b>TIRES</b>	
Passenger/Lite Truck Tires:*	\$3.00 Off Rim/\$4.00 On Rim
Tractor Trailer:	\$12.00 Off Rim/ \$15.00 On Rim
Agricultural/farm tractor:	\$20.00
Highway/construction/heavy equipment:	\$30.00
<i>*members received discount on tire disposal</i>	
<b>OTHER</b>	
Freon Appliances (frig, freezers, A/C, dehumidifiers, etc.)	\$20.00/ unit
Scrap Metal (non-Freon appliances, propane tanks, misc.)	NO CHARGE
Batteries (lead acid, household, rechargeable)	NO CHARGE
Used Motor Oil	NO CHARGE
Fluorescent light bulbs:	
CFL (compact fluorescent)	NO CHARGE
Tubes- 4ft or smaller	\$1.00/tube
-8ft or longer	\$2.00/tube
Shoes (must be reusable, no flip flops, slippers, singles, ski/winter boots, or skates)	NO CHARGE
<b>****Cash Or Check Only****</b>	

<b>ALL COVERED AND NON-COVERED DEVICES LISTED BELOW ARE ACCEPTED:</b>
<b>Covered Device:</b> ( <i>required by law to be recycled</i> )
Anything directly connected to a computer system:
CPUs/Towers
Laptops
Computer monitors—CRT and LED/LCD
Peripherals (mouse, keyboards, speakers)
Printers
Copiers (desktop and stand-alone)
TVs—all types, including consoles
NO LIMIT ON SIZE OF TVs
<b>Non-covered Device:</b> ( <i>not required by law to be recycled</i> )
Answering Machines
Camcorders
Cameras
Cell phones
Christmas lights
Docking Stations
Electric typewriters
Electrical Cords
Fax/copy machines/duplicators
Gaming consoles/controllers
Medical equipment
Pagers
Radios
Remote Controls
Stereos/tape/CD players
Microwaves
Telephone systems
Testing equipment
Toner/ink cartridges
VCR/DVD players

HOUSEHOLD HAZARDOUS WASTE is **NOT** accepted.  
NEXT HHW COLLECTION  
Call for details

## QUICK REFERENCE GUIDE

### Page

12	Waste and Recycling Haulers
14	Transfer Stations and Landfills
16	Material Recovery Facilities (MRFs)
17	Specialized Recycling Transportation and Disposal Services
21	Municipal Curbside Recycling Programs
27	Public Drop-off Recycling Programs
31	Drug Disposal: MedReturn Collection Sites
33	Electronics Recycling Options
34	Curbside E-waste and Household Hazardous Waste Collection (limited to specific municipalities)
35	Paper Recycling: Royal Oak Paper Retriever Locations
40	Drop-off Businesses

### **AEROSOL CANS-EMPTY**

21	Municipal Curbside Recycling Programs accepting steel cans
27	Public Drop-Off Recycling Programs accepting steel cans

### **AEROSOL CANS-NOT EMPTY**

See HHW

### **ALUMINUM CANS**

48	Stanko Products/ Dens-A-Can
49	Target (all locations)

### **AMMUNITION**

40	A&S Indoor Pistol Range
44	Johnson's Gun Depot

### **ANTIFREEZE**

28	City of Lower Burrell
34	Curbside E-waste and Household Hazardous Waste Collection (limited to specific municipalities)
44	Jiffy Lube (some locations, call first)
46	Mr. Tire Auto Service Center (all locations)
47	Pep Boys (all locations)
48	Sears Automotive

### **ASEPTIC CONTAINERS (milk, juice, broth cartons)**

21	Municipal Curbside Recycling Programs
27	Public Drop-Off Recycling Programs

### **APPLIANCES/SCRAP METAL (non-Freon)**

17	A-1 Hauling (Loyalhanna) \$
17	A-1 Hauling (Delmont) \$
19, 44	Junk Be Gone \$
19	Jimmy Junk Man \$
19	1-800-Got-Junk \$
19	Junk King \$
28	City of Lower Burrell
30	Salandro's Refuse, Inc., Crabtree
42	Daniels & Miller, Greensburg
43	Gombach Towing & Auto Salvage, Penn Township
43	Goodwill Industries (Irwin Location only)
46	Mangery & Sons of Penn, Inc., Penn Borough
47	Perry Scrap Metals, West Newton
50	Webster Auto Wreckers, Rostraver
50	Weimer Iron & Scrap Metal, Saltsburg
4	<b>Westmoreland Cleanways Recycling Center</b>



**AUTOMOTIVE FLUIDS**

- 28 City of Lower Burrell
- 34 Curbside E-waste and Household Hazardous Waste Collection (limited to specific municipalities)
- 47 Pep Boys (all locations)

**BAGS – FILM PLASTIC**

(now includes: newspaper bags, dry cleaning bags, bread bags, veggie bags, product wrap, furniture wrap, electronic wrap, bubble wrap, cereal box liners, tyvek envelopes, any retail bag (remove plastic or string handles first), ice bags, any bags labeled #2 or #4)

- 42 Giant Eagle (all stores)
- 44 J C Penney (Westmoreland Mall)
- 45 Lowe's (all locations)
- 46 Mastrococco's Market, Derry
- 48 Shop N Save (all stores)
- 49 Target (all stores)
- 50 Wal-Mart (all stores)

**BATTERIES – HOUSEHOLD SINGLE USE**

No known outlets at this time

**BATTERIES - HOUSEHOLD RECHARGEABLE**

- 41 Best Buy, Greensburg
- 42 Giant Eagle, Murrysville
- 44 Home Depot, Greensburg
- 45 K-Mart (all locations)
- 45 Latrobe Tool Service, Latrobe
- 46 Lowe's (all locations)
- 46 Mother of Sorrows Church, Murrysville
- 46 Murray Automotive Electric (all locations)
- 48 Sam's Club
- 48 Sears, Westmoreland Mall
- 49 Staples (all locations)
- 49 Verizon Wireless (all locations)
- 50 Walmart (all locations)
- 51 Wireless Zone

**BATTERIES – LEAD ACID/VEHICLE**

- 12, 14, 28 McCutcheon Enterprises, Inc. Discard Depot, Apollo \$
- 28 City of Lower Burrell
- 30 Salandro's Refuse, Inc., Crabtree
- 34 Curbside E-waste and Household Hazardous Waste Collection (limited to specific municipalities)
- 40 Advance Auto Parts - all locations
- 41 Auto Zone - all locations
- 41 Bart's CITGO, Monessen
- 42 Daniels & Miller, Greensburg
- 44 Junk Be Gone
- 45 Latrobe Tool Service (small lead acid batteries)
- 46 Mr. Tire Auto Service Center - all locations
- 46 Murray Automotive Electric - all locations
- NAPA Auto Parts (all locations: New Kensington 41, Belle Vernon 41, Greensburg 43, Herminie 44, Kiski Valley 45, Ligonier 45, Latrobe 46, Mt. Pleasant 46, Scottdale 48, Saltsburg 49)
- 47 Pep Boys (all locations)
- 48 Sears Automotive, Westmoreland Mall
- 50 Walmart- all locations
- 4 **Westmoreland Cleanways Recycling Center**

**BUBBLE WRAP/PACKING PEANUTS**

- 49 The UPS Store (all locations)

**CARPET**

20 Steinberger Floors, Inc., Heidelberg

**CELL PHONES & ACCESSORIES**

Major cell phone retailers (Verizon, Cricket, Sprint, etc.)

44 Home Depot

45 K-Mart (all locations)

45 Latrobe Tool Service, Latrobe

46 Lowe's (all locations)

48 Sam's Club

49 Staples (all locations)

49 Target (all locations)

50 Walmart (all locations)

51 Wireless Zone

4 **Westmoreland Cleanways Recycling Center**

Westmoreland County Sheriff's Office, Courthouse, 2 Main Street Greensburg 15601

**CFLs – see FLUORESCENT LIGHT TUBES/CFLS**

**CLOTHING/HOUSEHOLD ITEMS**

41 Angela's Angels, Latrobe (formalwear)

41 Christian Layman Corps, Greensburg

43 Goodwill Industries

45 Kiducation Drop Boxes (clothing and shoes)

47 Planet Aid Drop Boxes (clothing and shoes)

47 St. Vincent DePaul Stores

48 Salvation Army Stores

50 YWCA Thrift Stores

**COMPUTER DISKS**

17 BackThruTheFuture

Internet GreenDisk Services, 1-800-305-3475, [www.greendisk.com](http://www.greendisk.com)

**COMPUTERS - SEE ELECTRONICS**

**CONSTRUCTION/BUILDING MATERIAL**

42 Construction Junction

43 Allegheny Valley Habitat for Humanity Restore, New Kensington

44 Central Westmoreland Habitat for Humanity Warehouse Outlet Store, Greensburg

40 American Architectural Salvage

**COOKING OIL – LARGE QUANTITY/RESTAURANTS**

18 Behon Services, Shanksville, PA 15560

20 Valley Proteins

**CORRUGATED CARDBOARD**

14 City of Latrobe Transfer Station

17 Allegheny Paper Shredders, Delmont

17 Atlas Waste Paper, Pittsburgh

19 M. Mallinger Company, Pittsburgh

20 Stanson Paper Processing LLC, Springdale

20 UsedCardboardBoxes.com

27 Greenridge Landfill, Scottdale

29 Salandro's Refuse, Inc., Crabtree

30 Borough of Youngwood Maintenance Building

43 Goodwill, Billott Avenue, Irwin (commercial only)

**CORRUGATED CARDBOARD- con't.**

- 21 Curbside Municipal Recycling Programs
- 27 Public Drop-off Recycling Programs
- 4 **Westmoreland Cleanways Recycling Center**

**ELECTRONICS**

- 12, 14, 28 McCutcheon Enterprises, Inc. Discard Depot, Apollo \$
- 16, 33 eLoop LLC, Plum \$
- 16.33.42 CyberCrunch/CCRCyber, Greensburg
- 17 A-1 Hauling (Loyalhanna) \$
- 17 A-1 Hauling (Delmont) \$
- 19, 44 Junk Be Gone \$
- 19 Jimmy Junk Man \$
- 19 1-800-Got-Junk \$
- 19 Junk King \$
- 28 City of Lower Burrell
- 34 Curbside E-waste and Household Hazardous Waste Collection (limited to specific municipalities)
- 41 Best Buy, Greensburg (No TVs and monitors),
- 42 Cyber Depot, Youngwood (PCs only) \$
- 43 Goodwill Industries - all locations
- 49 Staples (all locations)
- 49 Target (all locations)
- 4 **Westmoreland Cleanways Recycling Center**

**EYEGLASSES**

- Commercial Bank & Trust of PA, Ligonier Street, Latrobe, PA 15650
- National City Bank, East Main & Second Street, West Newton 15089
- Family Eye Doctors, Murrysville
- First Commonwealth Bank, 3880 Old William Penn Hwy, Murrysville 15668
- 44 Hansen & Torba, DMD, Derry/Latrobe
- Jones Brothers Optical, Murrysville
- 45 LensCrafters, Greensburg
- Murrysville Library, 4200 Sardis Road, Murrysville, PA 15668
- Dr. William Tylavsky, Murrysville
- U. S. Post Offices with 156\_\_\_ zip

**FIRE EXTINGUISHERS**

- 40 ABC Fire Extinguisher Company, Greensburg \$

**FLUORESCENT LIGHT TUBES/CFLS**

- 16 eLoop LLC, Delmont
- 20 Scott Electric, Greensburg (commercial only) \$
- 34 Curbside E-waste and Household Hazardous Waste Collection (limited to specific municipalities)
- 43 H&S Furniture and Lampshades (CFLs only)
- 44 Home Depot, Greensburg (CFLs only)
- 46 Lowe's (all locations)
- 4 **Westmoreland Cleanways Recycling Center** (tubes and CFLs--\$)

**FOOD WASTE**

- 12 Organix Recycling (commercial)

**FREON REMOVAL**

- 14 City of Latrobe Transfer Station \$
- 12, 14, 28 McCutcheon Enterprises, Inc. Discard Depot, Apollo \$
- 17 A-1 Hauling (Loyalhanna) \$
- 17 A-1 Hauling (Delmont) \$
- 19, 44 Junk Be Gone \$
- 19 Jimmy Junk Man \$



**FREON REMOVAL- con't.**

- 19 1-800- Got-Junk \$
- 19 Junk King \$
- 28 City of Lower Burrell \$
- 30 Salandro's Refuse, Inc., Crabtree \$
- 41 Appliance Service Company, Latrobe \$
- 42 Construction Junction
- 42 Donahue's Inc., Greensburg \$
- 46 Mullen Refrigeration, Latrobe \$
- 47 Ross Appliance & Sweeper Service, North Huntingdon \$
- 4 **Westmoreland Cleanways Recycling Center \$**

**GARDEN CHEMICALS**

See HHW

**GIFT CARDS**

- 18 Earthworks System, LLC

**GLASS – Commercial/Sheet/Window**

- 16 Carry-All Products, Inc., Connellsville
- 42 Bradish Glass, Greensburg

**GLASS – Beverage/Container**

- 16 Carry-All Products, Connellsville
- 21 Curbside Municipal Recycling Programs
- 27 Public Drop-off Recycling Programs

**HAZARDOUS WASTE – COMMERCIAL/INDUSTRIAL**

- 18 ECS&R
- 20 Safety Kleen

**HHW - HOUSEHOLD HAZARDOUS WASTE**

- 18 ECS&R
- 34 Curbside E-waste and Household Hazardous Waste Collection (limited to specific municipalities)  
Westmoreland Cleanways and Recycling Collection  
– **check [Westmorelandcleanways.org](http://Westmorelandcleanways.org) or call for schedule**  
Visit [www.zerowastepgh.org](http://www.zerowastepgh.org) for schedule of other county collections

**INKJET/LASER CARTRIDGES**

- U. S. Post Offices
- 49 Staples
- 49 Target
- 4 **Westmoreland Cleanways Recycling Center**  
Major office supply stores  
Operation Good Brother - 1-800-290-4444, [www.good-brother.org](http://www.good-brother.org)

**MEDICATIONS – NO SHARPS**

- 31 MedReturn Locations at Police Stations
- 42 CVS (all locations) - Mail back program: purchase pre-paid envelope (no sharps)
- 47 Rite Aid (all locations) - Mail back program: purchase pre-paid envelope (no sharps)
- 49 Walgreen (all location) - Mail back program: purchase pre-paid envelope (no sharps)

**MERCURY THERMOMETERS/THERMOSTATS**

Keep protected in original package; take to HHW Collection

**MOTOR OIL (USED)**

- 14 City of Latrobe Transfer Station, Latrobe
- 28 City of Lower Burrell
- 29 City of New Kensington Garage
- 30 Borough of Youngwood Maintenance Building (residential only)
- 40 Advance Auto Parts (all locations)
- 41 Auto Zone (all locations)
- 41 Bart's CITGO, Monessen
- 43 Gombach Towing & Auto Salvage, Penn Township
- 44 Jiffy Lube (all locations)
- 45 L & L Quik Lube, Latrobe
- 46 Mr. Tire Auto Service Center (all locations)
- NAPA Auto Parts (all locations: New Kensington 41, Belle Vernon 41, Greensburg 43, Herminie 44, Kiski Valley 45, Ligonier 45, Latrobe 46, Mt. Pleasant 46, Scottdale 48, Saltsburg 49)
- 47 Pep Boys (all locations)
- 48 Schade's Auto Repair
- 48 Sears Automotive
- 50 Walmart (all locations)
- 4 **Westmoreland Cleanways Recycling Center**

**PAINT – LATEX and OIL-BASED**

- 28 City of Lower Burrell (latex only) \$
- 40 American Architectural Salvage, Mt. Pleasant \$
- 57 Instructions on at-home drying and disposal

**PAINT – OIL-BASED/LACQUERS/THINNERS - See HHW**

**PAPER – COMMERCIAL / DOCUMENT DESTRUCTION**

- 17 Allegheny Paper Shredders \$
- 17 Atlas Material Recycling, Pittsburgh \$
- 17 AMD Paper Salvage, Jeannette
- 18 Iron City Workplace Services \$
- 19 Iron Mountain \$
- 19 Office Max \$
- 20 Shred-It \$
- 20 Stanson Paper Processing LLC
- 20 Westmoreland County Blind Association \$

**PAPER-NEWSPRINT, MAGAZINES, CATALOGS, JUNK MAIL, OFFICE PAPER**

- 21 Curbside Municipal Recycling Programs
- 27 Public Drop-off Recycling Programs
- 35 Royal Oak Paper Retriever Locations
- 4 **Westmoreland Cleanways Recycling Center**

**PAPER – NEWSPRINT ONLY**

- 40 Action for Animals, Derry Township
- Area Farmers (animal bedding) – refer to [westmorelandcleanways.org](http://westmorelandcleanways.org) for list

**PHARMACEUTICALS – see also MEDICATIONS**

- 31 MedReturn Collection Sites

**PHONE BOOKS – see TELEPHONE BOOKS**

**PLASTICS – MISC.**

- 17 AMD Paper Salvage, Jeannette: stretch film
- 46 Lowe's Garden Center: plant pots, nursery trays, plant tags
- 49 Target: Plastics #1 - #2

**POOL CHEMICALS - see HHW**

**PROPANE TANKS**

- 30 Salandro's Refuse, Inc.
- 40 Amerigas Cylinder, Ruffs Dale
- 44 Junk be Gone
- 4 **Westmoreland Cleanways Recycling Center**

**SCRAP METAL - see APPLIANCES**

**SHARPS**

- Stericycle Sharps Mailback Disposal Service:  
<http://www.stericycle.com/consumer-needle-disposal.html>
- Waste Management MedWaste Tracker Mail Return System  
<http://www.wm.com/residential/medical-waste.jsp>

**SMOKE DETECTORS**

- 18 First Alert
- Contains radioactive material; Return to manufacturer.

**STYROFOAM**

- 17 Appliance Warehouse, Pittsburgh

**TELEPHONE BOOKS**

- 20 Yellowbook Opt-Out Service
- 21 Curbside Municipal Recycling Programs
- 27 Public Drop-off Recycling Programs
- 28 Leechburg (Armstrong County) Recycling Center
- 4 **Westmoreland Cleanways Recycling Center**
- Area Farmers (animal bedding) – refer to [westmorelandcleanways.org](http://westmorelandcleanways.org) for list

**TELEVISIONS- SEE ELECTRONICS**

**TIRES - \$ all locations**

- 12, 14, 28 McCutcheon Enterprises, Inc. Discard Depot, Apollo
- 18 Blairsville Environmental Rubber, LLC, Blairsville
- 18 Dan's Tire, Dickerson Run
- 18 Hill's Tire, Donegal
- 27 Derry Township Municipal Building
- 28 Latrobe Transfer Station, Latrobe
- 28 City of Lower Burrell
- 42 Gombach Towing & Auto Salvage, Penn Township
- 44 Import-Export Tire Company Warehouse
- 46 Mr. Tire Auto Service Center - all locations
- 47 Pep Boys (all locations)
- 48 Sears Automotive, Westmoreland Mall
- 50 Walmart - check with individual store for availability
- 4 **Westmoreland Cleanways Recycling Center**

**WHITE GOODS - see APPLIANCES**

- 4 **Westmoreland Cleanways Recycling Center**

**YARD WASTE**

- 15 Valley Landfill, Irwin
- 16 A. P. Radomski Composting, Greensburg \$
- 16 J. A. Rutter Company, Murrysville \$
- 30 Youngwood Borough Maintenance Facility
- 43 Grandview Nurseries, Irwin \$

## **WESTMORELAND COUNTY WASTE AND RECYCLING HAULERS**

The following haulers serve residents, municipalities and businesses in Westmoreland County. They provide services such as residential and commercial waste and recycling collection, and dumpster/roll-off service.

Advanced Disposal of Western PA  
7095 Glades Pike Road  
Somerset, PA 15501  
814-444-0112/1-888-855-1715

Advanced Disposal-McClellandtown  
1184 McClellandtown Road  
McClellandtown, PA 15458  
724-437-7336

Big's Trucking, Inc.  
4859 State Rt. 51 North Belle Vernon, PA 15012  
724-379-4331

Burrell Sanitation  
2800 Lori Drive, Lower Burrell, PA 15068  
724-335-7389

County Hauling/Tervita Corporation  
111 Conner Lane, Belle Vernon, PA 15012  
724-929-7694

Karr Dumpster Service (small bins available)  
140 Evanstown Road, Irwin, PA 15642  
724-446-7137

McCutcheon Enterprises, Inc.  
250 Park Road, Apollo, PA 15613  
(724) 568-3623

McInchok Sanitation  
600 Jackson Road, Ligonier, PA 15658  
724-238-4537

Organix Recycling  
9980 West 190<sup>th</sup> Street Suite C Mokena, IL 60448  
708-326-3900/ Fax 708-326-3903  
info@organixrecycling.com

Republic Services  
Allied Waste Services of Scottdale  
234 Landfill Road, Scottdale, PA 15683  
Greenridge Reclamation Landfill-Scottdale  
724-887-9400/1-877-788-9400

Salandro's Refuse, Inc.  
P. O. Box 392; Roosevelt Way Rear, Crabtree, PA 15624  
724-668-2020  
<http://salandros.com/>

Sekora Sanitation  
P. O. Box 200, Luxor, PA 15662  
724-834-0780

Shank Sanitation

- ♻️ 411 Spiering Lane, Lower Burrell, PA 15068  
724-335-8320
- ♻️ 4201 Arnold Avenue New Kensington, PA 15068  
724-226-8320

Thoma Dumpster Service (bought Karr equipment 7/13)  
165 Limerick Road  
Herminie, PA 15637  
724-446-0642

Vogel Disposal Service, Inc.  
121 Brickyard Road  
Mars, PA 16046  
724-625-1511

Waste Management

- ♻️ Pittsburgh District  
310 Leger Road North Huntingdon, PA 15642  
1-800-458-4090
- ♻️ Homer City District  
4562 Rt. 119 South Homer City, PA 15748  
(800) 677-4884

Westmoreland Services  
106 Nicki Lane Latrobe, PA 15650  
724-424-3031

**WASTE AND RECYCLING RESOURCE MANAGERS**

Companies that manage waste disposal contracts for customers with multiple locations, typically specialize in institutional settings, national accounts, industries such as hospitality, retail, property management, construction, and health care.

Quest Resource Management Group  
6175 Main Street Ste. 420  
Frisco, TX 75034  
972-464-0004

Sequoia Waste Solutions  
90 Beta Drive  
Pittsburgh, PA 15238  
412-968-3990

Mead & Hunt  
1743 Wazee Street Suite 400  
Denver, CO 80202  
303-597-0993

## WESTMORELAND COUNTY TRANSFER STATIONS AND LANDFILLS

Each landfill in the Commonwealth of Pennsylvania must provide a public drop-off for recyclables as part of its operating permit.

Advanced Disposal/Mostoller Landfill  
7095 Glades Pike Road  
Somerset, PA 15501  
814-444-0112

Advanced Disposal  
Chestnut Valley Landfill  
1184 McClellandtown Road  
McClellandtown, PA 15458  
724-437-7336

Latrobe Transfer Station  
696 Mission Road, Latrobe PA 15650  
724-537-8974  
Mon-Fri 7 a.m. - 2 p.m.; Sat. 7a.m. - 11:30 a.m.; Sun - Closed  
Cardboard (Corrugated, chipboard)

Single Stream:

- Aseptic containers (juice, milk, soy milk and other liquids)
- Aluminum Cans, foil, pie tins/Bimetal Cans/Aerosol Cans
- Clear/Green/Brown Glass
- Plastics #1 through #5, #7
- Mixed paper (newsprint, magazines, catalogs, junk mail)
- Cardboard (corrugated, chipboard)
- Telephone books

Yard Waste (brush, leaves) \$

Freon Appliances \$

Tires \$

McCutcheon Enterprises, Inc. - Discard Depot  
250 Park Road, Apollo, PA 15613-8730  
[www.completewastemgmt.com](http://www.completewastemgmt.com)  
724-568-3623  
7:00 a.m. – 4:30 p.m. M-F; call for Saturday hours  
Electronics (computers, monitors, printers, fax machines, etc.) \$  
Scrap metal, appliances  
Freon Appliances \$  
Tires \$  
Vehicle Batteries \$

Republic Services, Inc./ Greenridge Reclamation Landfill  
234 Landfill Road, Scottdale, PA 15683-7742  
724-887-9400; 1-877-788-9400  
Corrugated Cardboard  
Aluminum/Bi-metal/empty aerosol cans  
Newsprint (B&W)  
Clear/Green/Brown Glass  
Plastics #1 through #5, #7

Westmoreland Sanitary Landfill (formerly Westmoreland Waste LLC)  
901 Tyrol Boulevard, Belle Vernon, PA 15012-4569  
724-929-7694  
7 a.m. - 3 p.m. M-F; 7 a.m. - 11 a.m. Sat  
Aluminum/Bi-metal/empty aerosol cans  
Clear/Green/Brown Glass  
#1 & #2 Plastic  
Mixed paper (newsprint, magazines/catalogs, office paper, junk mail)  
Cardboard  
Tires \$  
Asbestos (manifested)

Vogel Disposal, Inc.  
Seneca Landfill  
421 Hartmann Road  
Evans City, PA 16033  
724-625-9000

Waste Management/Valley Landfill  
6015 Pleasant Valley Road, Irwin, PA 15642  
724-744-4000  
Mon-Fri 5:30 am-3:30 pm Sat-Sun Closed  
Aluminum/Bi-metal/empty aerosol cans  
Clear/Green/Brown Glass  
Plastics #1 through #5, #7  
Grass Clippings \$  
Brush/leaves \$

### **MATERIAL RECYCLING (or RECOVERY) FACILITIES (MRFs)**

Recyclables that are collected through curbside, drop-off or commercial programs are delivered to a MRF where the material is sorted and prepared for shipment to end users.

Carry-All Products, Inc.  
Offices: P. O. Box 201 Connellsville, PA 15425  
724-626-1927  
Yard: 1005 Modulus Rd MT Pleasant, PA 15666-2120  
(724) 547-4550  
Mixed glass, cullet processing

CyberCrunch  
1628 Roseytown Road, Unit 8 Greensburg PA 15601  
(866) 925-2354  
[www.ccr cyber.com](http://www.ccr cyber.com)  
All electronic waste - commercial and residential (no TVs)  
Secure hard drive destruction service  
Small household appliances

eLoop LLC  
724-519-7646  
[www.eloopllc.com](http://www.eloopllc.com)

Waste Management Recycling  
4100 Grand Avenue Neville Island, PA 15225  
412-250-0275  
Commercial and residential single stream processing

JVS Environmental LLP  
413 Broadway Street Rockwood, PA 15557  
814-442-4481 / 814-233-5534  
All electronic waste - commercial and residential  
Lighting: fluorescent tubes/CFLs, ballasts, transformers  
Secure hard drive destruction service  
Televisions  
Small household appliances

A. P. Radomski Composting  
1474 State Route 819  
Greensburg, PA 15601-8985  
724-838-9158  
Organics/yard waste/wood waste

J. A. Rutter Company  
4917 Old William Penn Highway Murrysville, PA 15668  
724-327-1101  
<http://www.jarutter.com/>  
Organics/yard waste/wood waste



## **SPECIALIZED RECYCLING TRANSPORTATION AND DISPOSAL SERVICES**

Recycling options for special types of waste or commercial/institutional/industrial establishments

### **A-1 Hauling**

1305 Latrobe Derry Rd, Loyalhanna, PA 15661

<http://www.a1services4you.com/>

(724) 539-3792

One item, truck load, dumpster load, loading and clean outs with pick up truck, box truck, dump truck or roll off dumpster service

### **A-1 Hauling (no connection to Loyalhanna)**

Delmont, PA

724-216-3496

Hauling, cleanouts, etc.

### **AMD Paper Salvage**

1092 Claridge Elliott Road, Jeannette, PA 15644

1-412-400-1150, Call first

Corrugated Cardboard

Mixed paper; office paper

Plastic stretch film

### **Appliance Warehouse**

523 Bingham Street Pittsburgh, PA 15203

<http://www.appliancewarehouse.com/>

800-557-0003

Refurbish, recycle and resale of old appliances and parts

Block Styrofoam

Drop off Mon-Sat 9 a.m. – 5 p.m.

### **Allegheny Paper Shredders**

Old William Penn Highway East Delmont, PA 15626

1-800-245-2497; 724-468-4300

[alleghenyshredders.com](http://alleghenyshredders.com)

Office Paper (for document destruction) \$

All non-food paper products (magazines, newspapers, books, etc)

Corrugated cardboard

Computer hard drives (for document destruction; not recycling) \$

Drop off and pick up available (call first)

### **Atlas Material Recycling**

2329 Wharton Street, Pittsburgh, PA 15203

412-431-5329

[www.atlasrecycles.com](http://www.atlasrecycles.com)

Paper: newsprint, office grades, catalogs, printers trim

Corrugated cardboard

Plastic: HDPE, PET; LDPE, polystyrene, polypropylene, polycarbonate, rigid plastic

Pick up for office waste, OCC

Mon – Fri; 4am-4pm

### **Back Thru The Future - Technology Disposal**

New Jersey

[www.cdrecyclingforfree.com](http://www.cdrecyclingforfree.com)

973-823-9752

CDs, DVDs, hard drives

Ship to them at no cost



Behon Services  
P. O. Box 1, Shanksville, PA 15560  
800-267-7531  
Waste cooking oil

Blairsville Environmental Rubber, LLC (BER)  
5490 Rt. 217N Blairsville, PA 15717  
724-388-3663  
Tire recycling and disposal services

Dan's Tire  
Dickerson Run, PA 15430  
724-529-7621  
Tire disposal

Earthworks System, LLC  
33200 Bainbridge Road, Suite E  
Solon, OH 44139  
<http://www.earthworkssystem.com/Consumers/>  
Plastic gift cards, credit cards, drivers licenses

ECS&R  
Business and in- home collection of household chemicals and electronics  
814-425-7773  
[www.ecsr.net](http://www.ecsr.net)

First Alert  
(800) 323-9005  
First Alert, BRK and FamilyGuard Smoke detectors: must call First Alert before returning unit.

Gateway Recycling  
416 Halstead Boulevard  
Zelienople, PA 16063  
412-837-8777  
<http://gatewayrecycle.com/home>

Green Action Project  
[www.greenactionproject.com/compak](http://www.greenactionproject.com/compak)  
CFL collection boxes

Hill's Tire  
Donegal, PA 15628  
Jeremy Hill, Owner  
724-570-2982  
Tire disposal

Iron City Workplace Services  
6640 Frankstown Avenue  
Pittsburgh, PA 15206  
800-532-2010  
<http://www.ironcityuniform.com/rental-products-services/document-shredding/>

Iron Mountain  
1-800-899-IRON  
[www.ironmountain.com](http://www.ironmountain.com)  
Records management, document destruction \$

JimmyTheJunkman.com  
724-217-2522  
Household and business cleanouts; recycle or donate reusable items;  
properly dispose of the rest  
Electronics recycling  
Freon removal w/unit disposal \$

Junk-B-Gone  
2833 Rt. 66 Export, PA 15632  
724-468-3443  
Household and business cleanouts; recycle or donate reusable items;  
properly dispose of the rest  
Freon removal w/unit disposal \$  
Electronics recycling

Junk King  
3028 Unionville Rd. Branberry, PA 16066  
1-888-888-JUNK  
Household and business cleanouts; recycle or donate reusable items;  
properly dispose of the rest  
Electronics recycling  
Freon removal w/unit disposal \$

1-800-GOT-JUNK?  
[http://www.1800gotjunk.com/us\\_en/locations/junk-removal-pittsburgh/](http://www.1800gotjunk.com/us_en/locations/junk-removal-pittsburgh/)

Liberty Tire Recycling  
Lockport, NY 14094  
716-433-9294  
Tire recycling \$

M. Mallinger Company  
301 Brushton Avenue Pittsburgh, PA 15221  
412-242-4555  
[www.mmboxes.com](http://www.mmboxes.com)  
Buy and sell used corrugated cardboard boxes, gaylords, plastic crates

Matthews Clean Outs LLC  
412-320-3360  
Service area 25 mile radius of 15642  
matthewscleanouts@gmail.com

Office Max (service by Shred-it)  
941 East Pittsburgh Street Greensburg, PA 15601  
724-837-1775  
Secure document destruction and recycling \$

A. P. Radomski Composting  
1474 State Route 819  
Greensburg, PA 15601-8985  
724-838-9158  
Yard waste \$  
Wood waste \$

Royal Oak Recycling  
4830 Grand Avenue, Pittsburgh, PA 15225  
412-264-3377  
Paper Retriever Program  
Commercial recycling

J. A. Rutter Company  
4917 Old William Penn Highway, Murrysville, PA 15668  
724-327-1101  
Yard waste \$  
Wood waste \$

Safety Kleen  
150 Allenbill Drive Johnstown, PA 15904  
814-266-4815  
Chemical/hazardous waste disposal \$

Scott Electric  
1000 South Main Street, Greensburg, PA 15601  
<http://www.scottelectricusa.com/>  
724-834-4321  
Electronics \$ COMMERCIAL ONLY  
Fluorescent bulbs, ballasts, fixtures \$ COMMERCIAL ONLY (minimum 24 tubes)

Shred-It  
611 East Pittsburgh McKeesport Blvd. North Versailles, PA 15137  
412-823-8703  
Document destruction

Stanson Paper Processing LLC  
876 R. I. Lampus Avenue  
Springdale, PA 15144  
724-275-7285  
Newspapers  
Magazines  
Corrugated cardboard / Premiums paid for baled cardboard  
Office paper

Steinberger Floors, Inc.  
1611 Railroad Street  
Heidelberg, PA 15106  
412-276-2076  
<http://steinbergerfloors.com/carpet-recycling.shtml>  
Member: Carpet America Recovery Effort (CARE), <http://www.carpetrecovery.org/>  
Provides easy, accessible and economical means to dispose of carpet in an environmentally responsible way.

Used Cardboard Boxes.com  
[www.usedcardboardboxes.com](http://www.usedcardboardboxes.com)  
1-888-269-3788  
Sell bulk shipping boxes, gaylord/pallet boxes  
Buy gaylord/pallet boxes, shipping boxes for moving, etc.

Valley Proteins  
704-718-9842  
Waste cooling oil, rendering

Westmoreland County Blind Association  
911 South Main Street Greensburg, PA 15601  
724-837-1250  
Office paper: secure document destruction \$

Yellowbook Opt-Out Service  
1-800-YB Yellow (1-800-929-3556)

## CURBSIDE MUNICIPAL RECYCLING PROGRAMS

\*Denotes mandated municipality. All mandated municipalities (PA municipalities with >5,000 residents and population density of 300/square mile) are required to make available curbside recycling service and leaf waste collection to their residents. This service can be provided by the municipality, through a hauler contract with the municipality, or through private subscription.

\*\*Single Stream Recycling: includes ALL of the following materials in one "stream", meaning material does not have to be sorted: Aseptic cartons (milk, broth, drink boxes); Aluminum cans, bimetal cans, empty aerosol cans, aluminum foil, pie tins; clear/green/brown bottle glass; # 1 through #7 (#6 Styrofoam excluded) plastic, including bottle caps; mixed paper; cardboard and chipboard. Single stream collections listed may include any or all of these materials. Check the program description for any exclusions.

City of Arnold\*

<http://www.arnoldpa.org/>

724-337-4441

Aluminum/Bi-metal/empty aerosol cans

Clear/Green/Brown Glass

#1 & #2 Plastic

Newsprint (B&W only)

Leaves (spring & fall)

Derry Borough

[derry.boro@comcast.net](mailto:derry.boro@comcast.net)

724-694-2030

Single Stream:

Aseptic containers (juice, milk, soy milk and other liquids)

Aluminum/Bi-metal/empty aerosol cans

Clear/Green/Brown Glass

Plastics #1 through #5, #7

Mixed paper (newsprint, magazines, catalogs, junk mail, office paper)

Cardboard (corrugated, chipboard)

Telephone books

Derry Township\*

<http://derrytownship.com/>

724-694-8835

1-800-677-4884 – Waste Management

Aluminum/Bi-metal/empty aerosol cans

Clear/Green/Brown Glass

Plastics #1 through #5, #7

Leaves (fall - call for schedule)

Export Borough

724-327-3611

Single Stream:

Aseptic containers (juice, milk, soy milk and other liquids)

Aluminum/Bi-metal/empty aerosol cans

Clear/Green/Brown Glass

Plastics #1 through #5, #7

Mixed paper (newsprint, magazines, catalogs, junk mail, office paper)

Cardboard (corrugated, chipboard)

Telephone books



City of Greensburg\*

<http://www.city.greensburg.pa.us>

724-838-4324

Single Stream:

- Aseptic containers (juice, milk, soy milk and other liquids)
- Aluminum/Bi-metal/empty aerosol cans
- Clear/Green/Brown Glass
- Plastics #1through #5, #7
- Mixed paper (newsprint, magazines, catalogs, junk mail, office paper)
- Cardboard (corrugated, chipboard)
- Telephone books

“At Your Door” HHW and Electronic Waste (call Waste Management to schedule pick-up, pg. 34)

Brush - bundle in 4' sections

Grass clippings - bagged

Leaves: June-September - bagged

Leaves: October-November - vacuum at curb

Hempfield Township\*

<http://www.hempfieldtp.com/residents/recycling>

Advanced Disposal: 866-342-5497 or 724-437-7336

Hempfield: 724-834-7232 ext. 119

Single Stream:

- Aseptic containers (juice, milk, soy milk and other liquids)
- Aluminum/Bi-metal/empty aerosol cans
- Clear/Green/Brown Glass
- Plastics #1through #5, #7
- Mixed paper (newsprint, magazines, catalogs, junk mail, office paper)
- Cardboard (corrugated, chipboard)
- Telephone books

Curbside Electronic Waste and House Household Hazardous Waste Collection (Call Advanced Disposal to schedule pick-up, pg. 34)

Leaves (spring & fall)

Pay-As-You-Throw Program available to Senior Citizens

Hunker Borough

[www.hunkerborough@verizon.net](mailto:www.hunkerborough@verizon.net)

724-925-6535

Single Stream:

- Aseptic containers (juice, milk, soy milk and other liquids)
- Aluminum/Bi-metal/empty aerosol cans
- Clear/Green/Brown Glass
- Plastics #1 through #5, #7
- Mixed paper (newsprint, magazines, catalogs, junk mail, office paper)
- Cardboard (corrugated, chipboard)
- Telephone books

City of Jeannette\*

724-527-4023

<http://cityofjeannette.com/>

Aluminum/Bi-metal/empty aerosol cans

Clear & Brown Glass

Newsprint (B&W only)

Leaves/brush

City of Latrobe\*

[www.cityoflatrobe.com](http://www.cityoflatrobe.com)

724-539-8548; Republic Services 1-877-788-9400

Single Stream:

- Aseptic containers (juice, milk, soy milk and other liquids)
- Aluminum/Bi-metal/empty aerosol cans
- Clear/Green/Brown Glass
- Plastics #1 through #5, #7
- Mixed paper (newsprint, magazines, catalogs, junk mail, office paper)
- Cardboard (corrugated, chipboard)
- Telephone books

Large items: 1 item per week; no tires, or Freon unless tagged

Leaves (spring & fall)

Ligonier Borough

<http://www.ligonier.com/contacts.html>

724-238-4537 McInchok Sanitation

Single Stream:

- Aseptic containers (juice, milk, soy milk and other liquids)
- Aluminum/Bi-metal/empty aerosol cans
- Clear/Green/Brown Glass
- Plastics #1 through #5, #7
- Mixed paper (newsprint, magazines, catalogs, junk mail, office paper)
- Cardboard (corrugated, chipboard)
- Telephone books

City of Lower Burrell\*

<http://www.cityoflowerburrell.com/>

724-335-9875

Single Stream:

- Aseptic containers (juice, milk, soy milk and other liquids)
- Aluminum/Bi-metal/empty aerosol cans
- Clear/Green/Brown Glass
- Plastics #1 through #5, #7
- Mixed paper (newsprint, magazines, catalogs, junk mail, office paper, chipboard, telephone books)

Leaves & branches (drop-off behind City Hall)

City of Monessen \*

Mon Valley Refuse Disposal Authority

724-929-3943

Single Stream

- Aseptic containers (juice, milk, soy milk and other liquids)
- Aluminum/Bi-metal/empty aerosol cans
- Clear/Green/Brown Glass
- Plastics #1 through #5, #7
- Mixed paper (newsprint, magazines, catalogs, junk mail, office paper)
- Cardboard (corrugated, chipboard)
- Telephone books

Leaf waste: seasonal - contact city municipal garage

Mt. Pleasant Borough  
877-788-9400 Republic Services, Inc.  
<http://www.mtpleasantboro.com/>

Single Stream

- Aseptic containers (juice, milk, soy milk and other liquids)
- Aluminum/Bi-metal/empty aerosol cans
- Clear/Green/Brown Glass
- Plastics #1 through #5, #7
- Mixed paper (newsprint, magazines, catalogs, junk mail, office paper)
- Cardboard (corrugated, chipboard)
- Telephone books

Mt. Pleasant Township\*  
1-800-677-4884 Waste Management

Single Stream:

- Aseptic containers (juice, milk, soy milk and other liquids)
- Aluminum/Bi-metal/empty aerosol cans
- Clear/Green/Brown Glass
- Plastics #1 through #5, #7
- Mixed paper (newsprint, magazines, catalogs, junk mail, office paper, chipboard, telephone books)

Leaves (call for schedule)

Municipality of Murrysville\*  
[www.murrysville.com](http://www.murrysville.com)  
724-327-2100; Republic Services 1-877-788-9400

Single Stream:

- Aseptic containers (juice, milk, soy milk, and other liquids)
- Aluminum/Bi-metal/empty aerosol cans
- Clear/Green/Brown Glass
- Plastics #1 through #5, #7
- Mixed paper (newsprint, magazines, catalogs, junk mail, office paper);
- Telephone books
- Cardboard (corrugated, chipboard)

Pay-As-You-Throw Program available to Senior Citizens  
Leaves (spring & fall)  
Spring & fall cleanups - obtain landfill pass at Municipal Building

City of New Kensington\*  
[www.newkensington.org](http://www.newkensington.org)  
724-337-4523

- Aluminum/Bi-metal/empty aerosol cans
- Clear/Green/Brown Glass

"At Your Door" HHW and Electronic Waste (call Waste Management to schedule pick-up)  
Leaves – bagged; Brush - May-September  
Spring cleanup – call for dates

New Stanton Borough  
724-925-9700 Republic Services, Inc. 877-788-9400

Single Stream:

- Aseptic containers (juice, milk, soy milk and other liquids)
- Aluminum/Bi-metal/empty aerosol cans
- Clear/Green/Brown Glass
- Plastics #1 through #5, #7
- Mixed paper (newsprint, magazines, catalogs, junk mail, office paper, chipboard, telephone books)
- Telephone books



North Belle Vernon Borough  
Mon Valley Refuse Disposal Authority  
724-929-3943

Single Stream

- Aseptic containers (juice, milk, soy milk and other liquids)
- Aluminum/Bi-metal/empty aerosol cans
- Clear/Green/Brown Glass
- Plastics #1 through #5, #7
- Mixed paper (newsprint, magazines, catalogs, junk mail, office paper)
- Cardboard (corrugated, chipboard)
- Telephone books

Leaf waste: seasonal - contact city municipal garage

North Huntingdon Township\*

[www.nhtpa.us](http://www.nhtpa.us)  
724-863-3806

Single Stream:

- Aseptic containers (juice, milk, soy milk, and other liquids)
- Aluminum Cans/Aluminum foil/Pie tins/Bimetal Cans/Aerosol Cans
- Clear/Green/Brown Glass
- Plastics #1 through #5, #7
- Mixed paper (newsprint, magazines, catalogs, junk mail, office paper)
- Cardboard (corrugated, chipboard)
- Telephone books

Leaves - buy bags from township; call for schedule

Curbside Electronic Waste and House Household Hazardous Waste Collection (Call Republic Services to schedule pick-up, pg. 34)

Penn Township\*

<http://www.pennntp.org/>  
724-744-4858

Single Stream:

- Aseptic containers (juice, milk, soy milk, and other liquids)
- Aluminum Cans/Aluminum foil/Pie tins/Bimetal Cans/Aerosol Cans
- Clear/Green/Brown Glass
- Plastics #1 through #5, #7
- Mixed paper (newsprint, magazines, catalogs, junk mail, office paper)
- Cardboard (corrugated, chipboard)
- Telephone books

Leaves - Vacuum curbside; or buy bags from township

Rostraver Township\*

[www.rostraver.us](http://www.rostraver.us)  
724-929-8877; Big's Sanitation 724-379-4331

Aluminum/Bi-metal/empty aerosol cans Clear/Green/Brown Glass  
Plastic #1 & #2

Large items: Up to 2 items weekly; no tires, construction waste, or Freon unless tagged

Leaves - call for schedule

Scottsdale Borough\*

[www.scottsdale.com](http://www.scottsdale.com)  
724-887-8220

Aluminum/Bi-metal/empty aerosol cans  
Clear/Green/Brown Glass  
Plastics #1 through #5, #7

Leaves - call for schedule

Unity Township\*

<http://www.unitytownship.org/>

724-539-2546

Single Stream:

Aseptic containers (juice, milk, soy milk and other liquids)

Aluminum/Bi-metal/empty aerosol cans

Clear/Green/Brown Glass

Plastics #1 through #5, #7

Mixed paper (newsprint, magazines, catalogs, junk mail, office paper)

Cardboard (corrugated, chipboard)

Telephone books  
Leaves - call for schedule

Vandergrift Borough\*

724-567-7818

Aluminum/Bi-metal/empty aerosol cans

Clear/Green/Brown Glass

Leaves - fall - call for schedule

Youngwood Borough

724-925-3033; Republic Services 877-788-9400

<http://www.youngwood.org/>

Single Stream:

Aseptic containers (juice, milk, soy milk and other liquids)

Aluminum/Bi-metal/empty aerosol cans

Clear/Green/Brown Glass

Plastics #1 through #5, #7

Mixed paper (newsprint, magazines, catalogs, junk mail, office paper)

Cardboard (corrugated, chipboard)

Telephone books

## PUBLIC DROP-OFF RECYCLING PROGRAMS

Drop-off recycling programs collect a variety of materials and serve both residents and businesses. All drop-offs are open to the public unless otherwise noted.

B-Y Park – Trafford Borough  
Rt. 130 & Forbes Road Trafford, PA 15085  
412-372-7652  
Royal Oak Paper Retriever  
Aluminum cans  
Used Clothing (Veterans bin)

Derry Township Municipal Building (Township residents and businesses only)  
5321 Route 982, Derry PA 15627  
724-694-8835

Royal Oak Paper Retriever (for public use)  
Single Stream:

- Aseptic containers (juice, milk, soy milk, and other liquids)
- Aluminum/Bi-metal/empty aerosol cans
- Clear/Green/Brown Glass
- Plastics #1 through #5, #7
- Cardboard (corrugated, chipboard)
- Telephone books

Tires \$

Greenridge Reclamation Landfill/Republic Services  
234 Landfill Road, Scottdale, PA 15683-7742  
Monday-Friday: 6:30 a.m.-3:00 p.m. Saturday and Sunday: Closed  
724-887-9400; 1-877-788-9400 Republic Services, Inc.

Single Stream:

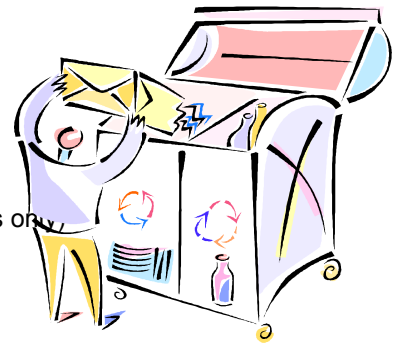
- Aseptic containers (juice, milk, soy milk, and other liquids)
- Aluminum/Bi-metal/empty aerosol cans
- Clear/Green/Brown Glass
- Plastics #1 through #5, #7
- Mixed paper (newsprint, magazines, catalogs, junk mail, office paper)
- Cardboard (corrugated, chipboard)
- Telephone books

Hempfield Township  
[www.hempfieldtpw.us](http://www.hempfieldtpw.us), 724-834-7232 ext. 119  
Municipal Building, 1132 Woodward Drive, Greensburg PA 15601  
Single Stream:

- Aseptic containers (juice, milk, soy milk, and other liquids)
- Aluminum/Bi-metal/empty aerosol cans
- Clear/Green/Brown Glass
- Plastics #1 through #5, #7
- Mixed paper (newsprint, magazines, catalogs, junk mail, office paper, telephone books)
- Cardboard (corrugated, chipboard)

City of Jeannette (Jeannette residents and businesses only)  
4th Street & Brickell Avenue, Jeannette PA 15644  
724-527-4023

Aluminum/Bi-metal/empty aerosol cans  
Clear Glass, Brown Glass (separated)  
Newspaper; white office paper  
Corrugated Cardboard  
Used motor oil



Latrobe Transfer Station  
696 Mission Road, Latrobe PA 15650  
724-537-8974

Mon-Fri 7 a.m. - 2 p.m.; Sat. 7a.m. - 11:30 a.m.; Sun - Closed

Cardboard (Corrugated, chipboard)

Single Stream:

Aluminum Cans, foil, pie tins/Bimetal Cans/Aerosol Cans

Clear/Green/Brown Glass

Plastics #1 through #5, #7

Mixed paper (newsprint, magazines, catalogs, junk mail, office paper, telephone books)

Yard Waste (brush, leaves) \$

Freon Appliances \$

Tires \$

Leechburg Recycling Center (Armstrong County)

Logan Avenue, Leechburg, PA 15656

724-845-9721

Hours of Operation: 8 a.m. – 11 a.m. M-F

All material must be separated by type:

Aluminum/Bi-metal/empty aerosol cans

Clear/Green/Brown Glass

#1 & #2 Plastic (caps removed)

Cardboard/chipboard

Mixed paper

Telephone Books

Newsprint (bagged or tied)

Magazines/catalogs

Lower Burrell Municipal Building

2800 Bethel Street Lower Burrell, PA 15068

724-335-9875 ext. 208

Call for information and schedule

Scrap metal /appliances

Automotive fluids/used motor oil

Vehicle batteries

Tires \$

Freon removal \$

Computers \$

Latex paint \$

McCutcheon Enterprises - Discard Depot

250 Park Road, Apollo, PA Apollo, PA 15613-8730

[www.completewastemgmt.com](http://www.completewastemgmt.com)

724-568-3623

7:00 a.m. – 4:30 p.m. M-F; call for Saturday hours

Electronics (computers, monitors, printers, fax machines, etc.) \$

Scrap metal, appliances

Freon Appliances \$

Tires \$

Vehicle Batteries \$

City of Monessen – City Garage

Parente Boulevard Monessen, PA 15062

724-929-3943

Cardboard

Newsprint, catalogs, magazines, mixed paper

Manor Borough

Located by the Library along the railroad tracks

Single Stream:

Aseptic containers (juice, milk, soy milk, and other liquids)  
Aluminum Cans, foil, pie tins/Bimetal Cans/Aerosol Cans  
Clear/Green/Brown Glass  
Plastics #1 through #5, #7  
Mixed paper (newsprint, magazines, catalogs, junk mail, office paper, telephone books)  
Cardboard (corrugated, chipboard)

New Kensington City Garage

Stevenson Boulevard & Rt. 56 New Kensington, PA 15068

724-335-8005

Royal Oak Paper Retriever

Used motor oil

North Belle Vernon Borough

Mon Valley Refuse Disposal Authority

724-929-3943

- ♻️ Belle Vernon Musical Society Parking Lot **Cardboard only**  
514 Grant Avenue Belle Vernon, PA 15012-1454
- ♻️ Speer Street across from City Public Works Building  
Newsprint, catalogs, magazines, mixed paper

North Huntingdon Township

- ♻️ Hahntown Elementary School 791 Entry Road, North Huntingdon, PA 15642
- ♻️ Hillcrest Intermediate School 11091 Mockingbird Drive, N. Huntingdon, PA 15642
- ♻️ Larimer VFD 1340 Brownstown Road Larimer, PA 15647
- ♻️ Norwin High School 251 McMahan Drive North Huntingdon, PA 15642
- ♻️ Norwin Middle School 10870 Mockingbird Drive North Huntingdon, PA 15642
- ♻️ Strawpump VFD 130 N. Thompson Lane North Huntingdon, PA 15642

[www.nhtpa.us](http://www.nhtpa.us)

724-863-3806

Single Stream:

Aseptic containers (juice, milk, soy milk, and other liquids)  
Aluminum Cans, foil, pie tins/Bimetal Cans/Aerosol Cans  
Clear/Green/Brown Glass  
Plastics #1 through #5, #7  
Mixed paper (newsprint, magazines, catalogs, junk mail, office paper, telephone books)  
Cardboard (corrugated, chipboard)

North Irwin Borough Garage

Second Street, North Irwin Borough 15642

[www.northirwinborough.com](http://www.northirwinborough.com)

724-864-5057

Single Stream:

Aseptic containers (juice, milk, soy milk, and other liquids)  
Aluminum Cans, foil, pie tins/Bimetal Cans/Aerosol Cans  
Clear/Green/Brown Glass  
Plastics #1 through #5, #7  
Mixed paper (newsprint, magazines, catalogs, junk mail, office paper, telephone books)  
Cardboard (corrugated, chipboard)

Salandro's Refuse, Inc.  
Roosevelt Way Rear, Crabtree, PA 15624  
<http://salandros.com/Recycling.htm>  
724-668-2020  
Corrugated cardboard  
Mixed metals/non-freon appliances  
Freon appliances \$  
Vehicle batteries  
Propane tanks

Tervita Corporation/Sanitary Landfill  
901 Tyrol Boulevard, Belle Vernon, PA 15012-4569  
724-929-7694  
8 a.m. - 5 p.m. M-F (recycle bins only, these are not hours of operation);  
Aluminum/Bi-metal/empty aerosol cans  
Clear/Green/Brown Glass  
#1 & #2 Plastic  
Mixed paper (newsprint, magazines/catalogs, office paper, junk mail)  
Cardboard  
Tires \$ (must be shredded)  
Asbestos (manifested)

Valley Landfill - WM  
6015 Pleasant Valley Road, Irwin, PA 15642  
724-744-4000  
M-F: 5:30 a.m. - 3 p.m.; Sat.-Sun. Closed  
Aluminum/Bi-metal/empty aerosol cans  
Clear/Green/Brown Glass  
Plastic #1 through #5  
Grass Clippings \$  
Brush/leaves \$

West Newton  
Alley behind Giant Eagle  
Single Stream:  
Aseptic containers (juice, milk, soy milk, and other liquids)  
Aluminum Cans, foil, pie tins/Bimetal Cans/Aerosol Cans  
Clear/Green/Brown Glass  
Plastics #1 through #5, #7  
Mixed paper (newsprint, magazines, catalogs, junk mail, office paper, telephone books)  
Cardboard (corrugated, chipboard)

Youngwood Borough Maintenance Facility  
508 South 3rd Street, Youngwood, PA 15697  
724-925-3033  
7 a.m. - 3 p.m. M-F  
Single Stream:  
Aluminum/Bi-metal/empty aerosol cans  
Clear/Green/Brown Glass  
Plastics #1 through #5, #7  
Mixed paper (newsprint, magazines, catalogs, junk mail, office paper, telephone books)  
Cardboard (corrugated, chipboard)  
Used motor oil (residential only)  
Yard Waste (see maintenance worker for drop off directions)

## DRUGS/PHARMACEUTICALS DISPOSAL

### WESTMORELAND COUNTY MEDRETURN LOCATIONS

City of Arnold Police Department  
601 Drey Street Arnold, PA 15068  
(724)339-9663

Allegheny Township Police Department  
136 Community Building Rd. Leechburg, PA 15656-9805  
(724)845-9410

Avonmore Borough Police Department  
619 Allegheny Avenue Avonmore, PA 15618  
(724)697-4747

Delmont Police Department  
77 Greensburg Street Delmont, PA 15626  
(724)468-8501

City of Greensburg Police Department  
416 S. Main Street Greensburg, PA 15601  
(724)838-4324

Irwin Police Department  
424 Main Street Irwin, PA 15642  
(724)864-3103

City of Latrobe Police Department  
901 Jefferson Street Latrobe, PA 15650  
(724)537-5526

Borough of Ligonier Police Department  
112 North Fairfield Street Ligonier, PA 15658-1110  
(724)238-5611

Ligonier Township Police Department  
One Municipal Park Drive Ligonier, PA 15658-8763  
(724)238-5105

City of Lower Burrell Police Department  
2800 Bethel Street Lower Burrell, PA 15068-3227  
(724)339-4287

Mt. Pleasant Police Department  
Box 119, Etze Avenue Mt. Pleasant, PA 15666  
(724)547-7210

City of Monessen Police Department  
239 Donner Avenue Monessen, PA 15062  
(724)684-6151

Murrysville Police Department  
4120 Sardis Road Murrysville, PA 15668  
(724)327-2111



City of New Kensington Police Department  
301 Eleventh Street New Kensington, PA 15068  
(724)337-4523

Penn Township Police Department  
2000 Commercial Drive Irwin, PA 15642  
(724)863-1119

Rostraver Township Police Department  
205 Municipal Drive Belle Vernon, PA 15012  
(724)929-8811

Seward Borough Police Department  
233 Indiana Street Seward, PA 15954-0456  
(814)446-6164

Borough of Trafford Police Dept.  
414 Brinton Avenue, Trafford, PA 15085  
(412)372-7652

Vandergrift Police Department  
109 Grant Avenue Vandergrift, PA 15690  
(724)568-5507

Washington Twp. Police Department  
289 Pine Run Church Road Apollo, PA 15613  
(724)727-3410

Upper Burrell Township Police Department  
3735 Seventh Street New Kensington, PA 15068  
(724)335-0664

Westmoreland County Park Police  
2 North Main Street Greensburg, PA 15601  
(724)830-3469

**Preparing items for disposal at a MedReturn location**

- All pharmaceutical drugs to be disposed must be in a sealed container such as the original container or a zip-lock bag. They can not be put into the MedReturn box loosely.
- Liquid pharmaceuticals should remain in the original container.
- Personal information should be removed or blotted out with a permanent marker.

**Items Accepted\*\***

- Prescription and over-the-counter solid medications, liquids, creams, ointments
- Tablets and capsules
- Pet medicines

**Items NOT Accepted\*\***

- Intravenous solutions
- Injectables, syringes, and needles (i.e. EpiPens)\* These items should be taken to a health care professional's office or to a hospital for proper disposal.
- Hydrogen peroxide
- Compressed cylinders or aerosols (e.g., asthma inhalers)
- Iodine-containing medications
- Thermometers
- Alcohol & illicit drugs (i.e. marijuana, heroin, LSD, etc.)

*\*\*Please check with your drop off location for a complete list of items accepted or not accepted.*



## **E-WASTE DISPOSAL OPTIONS**

Information is subject to change. Call facility directly for details.

### **Drop-off Programs**

Best Buy (NO TVs or monitors)  
125 Donohoe Road  
Greensburg, PA 15601  
724-838-8901

CyberCrunch (NO TVs)  
1628 Roseytown Road Unit 8  
Greensburg, PA, 15601  
(866) 925-2354

eLoop LLC  
724-519-7646  
[www.eloopllc.com](http://www.eloopllc.com)  
All electronic waste - commercial and residential

McCutcheon Enterprises, Inc./Discard Depot (NO TVs)  
250 Park Road, Apollo, PA 15613  
724-568-3623  
Fees apply

### **Westmoreland Cleanways Recycling Center (pg. 4)**

113 Innovative Lane (Building F)  
Latrobe, PA 15650  
724-879-4020

## **CURBSIDE E-WASTE and HOUSEHOLD HAZARDOUS WASTE COLLECTION**

All items must be SCHEDULED for Collection  
Contact directly for details

For Advanced Disposal customers in participating municipalities:

Hempfield Township  
Mt. Pleasant Township (E-Waste only)

To schedule a pick-up

1. Call the Customer Care Center at 1-800-437-1759

For Republic Services customers in participating municipalities:

Manor Borough (only E-Waste)  
Municipality of Murrysville

To schedule a pick-up

1. Call 724-887-9400
2. email [ManorBoroPa@republicservices.com](mailto:ManorBoroPa@republicservices.com)

For Waste Management customers in participating municipalities ("At Your Door Special Collection")

Avonmore Borough  
City of Greensburg  
Irwin Borough  
City of New Kensington  
North Huntingdon Township  
Trafford Borough

Three ways to schedule a pick-up

1. Go to [www.WMAtYourDoor.com](http://www.WMAtYourDoor.com)
2. Call 1-800-449-7587 (M-F 8:00 a.m. – 8:00 p.m.)
3. Email [AtYourDoor@wm.com](mailto:AtYourDoor@wm.com)



**ROYAL OAK RETRIEVER LOCATIONS (as of 1/2016)**

14th Quartermaster Detachment  
900 Armory Drive Greensburg, PA 15601

Allegheny Township Municipal Building  
136 Community Building Road Leechburg, PA 15656

Allegheny Township VFC #1  
Fire Hall Road Near Rt. 356 Leechburg, PA 15656

Aquinas Academy  
340 North Main Street Greensburg, PA 15601

Armbrust Christian Academy  
7786 SR 819 Armbrust, PA 15616

AssetGenie  
220 Huff Avenue Greensburg, PA 15601

Baggaley Elementary School  
4080 SR 982 Latrobe, PA 15650

Banco Industrial Park  
1061 Main Street North Huntingdon, PA 15642

Belle Vernon High School  
425 Crest Avenue Belle Vernon, PA 15012

Bellmar Middle School  
500 Perry Avenue Belle Vernon, PA 15012

Bovard VFD  
2 Washington Street Bovard, PA 15619

Brush Creek Lutheran Church  
177 Brush Creek Road Irwin, PA 15642

Calumet VFD  
Route 981 Calumet, PA 15621

Carbon VFD  
421 Juniper Street Greensburg, PA 15601

Central Westmoreland Career & Tech. Center  
240 Arona Road New Stanton, PA 15672

Clelian Heights School  
135 Clelian Heights Lane Greensburg, PA 15601

Derry Borough Maintenance Building  
100 West First Avenue Derry, PA 15627

Derry Township Municipal Building  
5321 SR 982 Derry, PA 15627

East Vandergrift Borough  
418 Kennedy Avenue East Vandergrift, PA 15690

First Christian Church of Greensburg  
134 Matthews Street Greensburg, PA 15601

Grapeville VFD  
4th & Painter Streets Grapeville, PA 15634

Greater Latrobe Jr./Sr. High School  
131 High School Road Latrobe, PA 15650

Greensburg Central Catholic High School  
911 Armory Drive Greensburg, PA 15601

Greensburg Free Methodist Church  
1261 Toppers Road Greensburg, PA 15601

Greensburg Minuteman Press  
206 East Pittsburgh Street Greensburg, PA 15601

H D Berkley Elementary School  
702 Stevenson Boulevard New Kensington, PA 15068

H W Good Elementary School  
1464 Herminie-West Newton Road Herminie, PA 15639

Hannastown VFD  
189 Front Street Hannastown, PA 15635

Harrison Park Elementary School  
10 Dell Avenue Jeannette, PA 15644

Hempfield #2 VFD  
421 Thornton Road Greensburg, PA 15601

High Park VFD  
400 Baughman Avenue Jeannette, PA 15644

Humane Society of Westmoreland County  
Rt. 119 North Greensburg, PA 15601

Jeannette Senior High School  
800 Florida Avenue Jeannette, PA 15644

Kiski Area High School  
240 Hyde Park Road Leechburg, PA 15656

Kiski Area Intermediate School  
640 Hyde Park Road Leechburg, PA 15656

Kiski North Primary School  
1048 School Road Leechburg, PA 15656

Kiski Upper Elementary School  
4350 Rt. 66 Apollo, PA 15613

Level Green Elementary School  
650 Cypress Court Trafford, PA 15085

Ligonier Township Municipal Building  
1 Municipal Park Drive Ligonier PA 15658

City of Lower Burrell Municipal Building  
2800 Bethel Street Lower Burrell, PA 15068

Lutheran Church of Our Savior  
1570 Clay Pike Irwin, PA 15642

Markle Fire Hall  
Phillips Avenue & White Cloud Road Leechburg, PA 15656  
470 Joyce Avenue Apollo, PA 15613

McCullough Elementary School  
213 Watt Road Jeannette, PA 15644

Mendon Elementary School  
164 SR 31 Ruffs Dale, PA 15679

Midway-St. Clair VFD  
1966 Broadway Avenue Greensburg, PA 15601

Monessen Food Pantry  
1033 Donner Avenue Monessen, PA 15062

Mountain View Elementary School  
1010 Mt. View Drive Greensburg, PA 15601

New Alexandria Community Center  
207 West Main Street New Alexandria, PA 15670

City of New Kensington  
Stevenson Boulevard & SR 56 New Kensington, PA 15068

New Stanton Borough  
451 North Center Avenue New Stanton, PA 15672

New Stanton United Methodist Church  
612 South Center Avenue New Stanton, PA 15672

North Hempfield VFC  
1284 Business Rt. 66 Greensburg, PA 15601

Norwin Middle School  
10870 Mockingbird Drive North Huntingdon, PA 15068

Penn Middle School  
11 Penn Middle Way Jeannette, PA 15644

Penn's Wood Civic Association  
860 Colonial Manor Road North Huntingdon, PA 15642

Print Illusion  
760 Greensburg Road Lower Burrell, PA 15068

Prudential Preferred Realty  
4420 William Penn Highway Murrysville, PA 15668

Rehoboth Church  
442 Rehoboth Road Belle Vernon, PA 15012

RecycleSource  
Donner Avenue Monessen, PA 15062

Rostraver Elementary School  
300 Crest Avenue Belle Vernon, PA 15012

Rostraver Township VFD #2  
800 Fellsburg Road Belle Vernon, PA 15012

Rostraver Township Public Works Garage  
Rt. 51 North & Concord Lane Belle Vernon, PA 15012

Ruffs Dale Elementary School  
842 Rt. 31 Ruffs Dale, PA 15679

St. Anne Home  
685 Angela Drive Greensburg, PA 15601

St. Edward Catholic Church  
120 St. Edwards Lane Herminie, PA 15639

St. Emma's Monastery  
1001 Harvey Avenue Greensburg, PA 15601

St. Vincent College  
300 Frazer Purchase Road Latrobe, PA 15650

Scottdale Borough  
Crescent Street & SR 819 Scottdale, PA 15683

American Architectural Salvage  
23 West Main Street Mt. Pleasant, PA 15666 (off of rt. 31)

South Greensburg Borough  
1815 South Broad Street South Greensburg, PA 15601

Southmoreland Primary Center  
1431 Water Street Alverton, PA 15612

Southwest Greensburg VFD  
716 Foster Street Greensburg, PA 15601

Southwest Greensburg VFD  
401 Guthrie Street Greensburg, PA 15601

SPHS Connect, Inc.  
301 East Donner Avenue Monessen, PA 15062

Stage Right  
105 West Fourth Street, Greensburg, PA 15601

Stanwood Elementary School  
255 Arona Road New Stanton, PA 15672

Suburban Community Church  
1787 Arona Road Irwin, PA 15642

Sunrise Elementary School  
300 Sunrise Drive Irwin, PA 15642

Supervalu  
400 Paintersville Road New Stanton, PA 15672

Trafford Middle School  
100 East Brinton Avenue Trafford, PA 15085

United Presbyterian Church of New Kensington  
601 Fifth Avenue New Kensington, PA 15068

Unity Township Municipal Building  
154 Beatty County Road Latrobe, PA 15650

University of Pittsburgh-Greensburg  
Finoli Drive & Mt. Pleasant Road Greensburg, PA 15601

Upper Burrell Township Municipal Building  
3735 Seventh Street Road New Kensington, PA 15068

Valley High School  
703 Stevenson Boulevard New Kensington, PA 15068

Vandergrift Borough Parking Lot  
Columbia & 11th Street Vandergrift, PA 15690

Washington Township VFD  
285 Pine Run Church Road Apollo, PA 15613

Wendover Middle School  
425 Arthur Place Greensburg, PA 15601

West Hempfield Elementary School  
469 Wendel Road Irwin, PA 15642

West Newton Lions Club  
511 Pittsburgh Street West Newton, PA 15089

West Newton Elementary School  
1208 Vine Street West Newton, PA 15089

West Point VFD  
100 Volunteer Drive Greensburg, PA 15601

Yough Intermediate Middle School  
171 Route 31 Ruffsedale, PA 15679

## DROP-OFF BUSINESSES

Many retail businesses recycle items related to their business. In most cases, the recycled item need not have been purchased from that store. If in doubt, check the store for details.

### ABC Fire Extinguisher Company

♻️ 151 Wilson Avenue Greensburg, PA 15601

♻️ 1391 Fry Road Penn Hills, PA 15235

412-287-5350 (call Jay)

Fire extinguishers

### A&S Indoor Pistol Range

617 Overhead Bridge Road, Youngwood, PA15697

724-925-1212

Ammunition

### Action for Animals

386 Rt. 217 Latrobe, PA 15650

724-539-2544

Newsprint (for animal bedding)

### Advance Auto Parts

♻️ 640 East Pittsburgh Street Greensburg, PA 15601

724-834-4708

♻️ 6489 Route 30 Jeannette, PA 15644

724-527-1116

♻️ 1598 Mission Road Latrobe, PA 15650

724-532-2551

♻️ 391 Hyde Park Road, Leechburg, PA 15656

724-845-0995

♻️ 2214 Summit Ridge Plaza Mt. Pleasant, PA 15666-1993

724-547-3178

♻️ 4010 Old William Penn Highway Murrysville, PA 15668

724-327-5880

♻️ 300 Stevenson Boulevard New Kensington, PA 15068

724-334-8795

♻️ 85 Tarentum Bridge Road New Kensington, PA 15068

724-334-1860

♻️ 12209 Lincoln Highway North Huntingdon, PA 15642

724-863-5858

♻️ 8716 Norwin Avenue North Huntingdon, PA 15642

724-861-8818

Used motor oil

Vehicle batteries

### American Architectural Salvage

23 West Main Street Mt. Pleasant, PA 15666 (off of Rt. 31)

724-552-0491

<http://americanarchitecturalsalvage.com/>

Good reusable building supplies

Working Appliances (less than 7 years old)

Wooden (not upholstered) furniture

Landscaping material, garden fixtures

Windows/Doors/HVAC/plumbing/kitchen fixtures

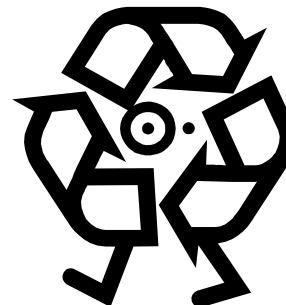
Latex Paint \$

### Amerigas Cylinder

198 Gressly Road Ruffs Dale, PA 15679

724-722-1011

Compressed gas cylinders; propane tanks





Angela's Angels  
816 Ligonier St., Latrobe, PA 15650  
724-836-6444

[www.angelasangels.org](http://www.angelasangels.org)

- ♻️ Alabaster's Attic Thrift Shop  
212 Outlet Way (WOW Outlet) Greensburg, PA 15601  
724-219-3102
- ♻️ Never Enough Boutique  
200 South Pennsylvania Avenue Greensburg, PA 15601  
724-838-1878
- ♻️ Wigs n' More, Inc.  
5924 Route 981 Latrobe, PA 15650  
724-532-1901
- ♻️ Westmoreland Community Federal Credit Union locations:  
1007 Georges Station Road Greensburg, PA 15601  
724-834-5580  
340 Waugaman Road Harrison City, PA 15636  
724-744-0670

New or gently worn prom-appropriate gowns and accessories for young ladies in need; now accepting First Holy Communion dresses

Appliance Service Company

- ♻️ 309 Price Street Bovard, PA 15619 (or)
- ♻️ 220 Thompson Street Latrobe, PA 15650

724-539-7633

Freon removal \$

Auto Parts of New Kensington/NAPA

651 Industrial Boulevard New Kensington, PA 15068  
724-337-7630

Vehicle batteries (with purchase of new one)

Used motor oil

Auto Zone

- ♻️ 707 Clearview Drive Latrobe, PA 15650  
724-537-0203
- ♻️ 801 Carl Avenue New Kensington, PA 15068  
724-339-2202

Used motor oil

Vehicle batteries

Bart's CITGO/Tire & Auto Service

1704 Grand Boulevard Monessen, PA 15062  
724-684-4349

Vehicle batteries

Used motor oil

Belle Vernon Auto Parts/NAPA

923 Broad Avenue Belle Vernon, PA 15012  
724-929-5522

Vehicle batteries

Used motor oil

Best Buy

125 Donohoe Road Greensburg, PA 15601  
724-838-8901

Limit 2 units per household per day

Consumer electronics: computer towers, VCRs, DVDs, phones, cameras, peripherals

All rechargeable batteries and cellphones

NO TVs or computer monitors

Bradish Glass Company  
444 Willow Crossing Road Greensburg, PA 15601  
724-837-5100  
Glass - residential and commercial

Christian Layman Corp  
258 E Pittsburgh Street, Greensburg, PA 15601  
(724) 834-4464  
Household items, clothing  
CyberCrunch LLC/dba CCRCyber  
[www.ccr cyber.com](http://www.ccr cyber.com). 866-925-2354 (call for drop-off hours)  
Omeide Industrial Park, 1628 Roseytown Road Unit 8, Greensburg 15601  
Electronics (computers, monitors, etc.)\$

Construction Junction  
214 North Lexington Street, Pittsburgh, PA 15208  
412-243-5025, <http://www.constructionjunction.org>  
Deconstruction consultations  
Free pickup is available for larger donations  
Donations and Resale of: Good reusable building supplies, Appliances in working condition,  
Interior/furniture, Windows/Doors, HVAC/plumbing/kitchen fixtures  
Donated but not resold: tote bags, unopened medical supplies, bicycles  
Recycling: Freon & non-Freon appliances, scrap metal, single stream items

CVS (All Locations)

- ♻️ 125 Donahue Rd, Greensburg PA 15601  
Phone: 724-836-7041
- ♻️ 305 Mountain Laurel Plaza, Latrobe PA 15650  
Phone: 724-537-5571
- ♻️ Route 819 South, Mount Pleasant, PA 15666  
Phone: 724-547-4563
- ♻️ 95 Freeport Street, New Kensington, PA 15068  
Phone: 724-337-7691

Unwanted prescription and over-the counter medications (no sharps or controlled substances):  
purchase postage paid envelopes to Sharp Compliance

Cyber Depot  
302 North Third Street Youngwood, PA 15697  
[www.cyberdepot.pa.com](http://www.cyberdepot.pa.com)  
724-925-2800  
PCs only (for refurbish and resale)

Daniels & Miller  
242 North Hamilton Avenue Greensburg, PA 15601  
724-834-1500  
Scrap metal  
Vehicle batteries  
NO Freon Appliances

Donahue's, Inc.  
535 Rugh Street Greensburg, PA 15601  
724-834-9178  
Freon removal In home or in shop \$

Giant Eagle (all locations)  
Plastic Grocery Bags

Gombach Towing & Auto Salvage  
1131 Gombach Road Jeannette, PA 15644  
724-744-4430  
Scrap metal, siding, vehicles  
Used motor oil  
Tires \$

Goodwill Industries

- ♻️ 140 Finley Road, Belle Vernon, PA 15012  
724-929-4202
- ♻️ 149 Donohoe Road Greensburg, PA 15601  
724-834-2156
- ♻️ 1054 Countryside Plaza Mt. Pleasant, PA 15666  
724-547-2649
- ♻️ 4612 William Penn Highway Murrysville, PA 15668  
724-327-0225
- ♻️ 8755 Norwin Avenue North Huntingdon, PA 15642  
724-864-2980

Electronics: computers, peripherals  
Household items  
Clothing

Goodwill Industries

75 Billott Avenue Irwin, PA 15642  
864-5105  
Computers, fax machines, copiers  
Scrap metal  
Cardboard - commercial only

Grandview Nurseries, Inc.

2721 Ipnar Road North Huntingdon, PA 15642  
724-863-8979 (call first)  
Leaves/brush \$  
Grass clippings \$

Greensburg Auto Parts/NAPA

1226 South Main Street Greensburg, PA 15601  
724-834-3520  
Vehicle batteries  
Used Motor Oil

H&S Furniture and Lampshades

121 Lloyd Avenue Latrobe, PA 15650  
724-539-8240  
CFLs  
Lighting restoration & rewiring  
Oil lamp conversions

Habitat for Humanity ReStore/Allegheny Valley

1170 Industrial Boulevard New Kensington, PA 15068  
724-889-5033  
Usable furniture and home accessories  
Appliances in working condition  
Building materials  
Doors/windows; electrical supplies and fixtures; plumbing supplies  
Cabinets/countertops

Habitat for Humanity Warehouse Outlet Store/Central Westmoreland  
WOW Outlet/212 Outlet Way Greensburg, PA 15601  
724-523-0308  
Usable building materials for resale or home construction

Hansen & Torba DMD  
412 Route 217 Latrobe, PA 15650  
724-539-4591  
Used eyeglasses

Herminie Auto Parts/NAPA  
104 Sewickley Avenue, Herminie, PA 15637  
724-446-9000  
Vehicle batteries (with in-store purchase only)  
Used motor oil

Home Depot  
6291 SR 30 Greensburg, PA 15601  
724-523-0468  
All rechargeable batteries and cell phones  
CFLs

Import-Export Tire Company Warehouse (this location only)  
400 Unity Street Latrobe, PA 15650  
724-539-8022  
Tires \$

J C Penney  
Westmoreland Mall  
5256 Rt. 30 Greensburg, PA 15601  
724-836-8110  
Plastic grocery bags

Jiffy Lube Service Centers (some locations- call ahead )  
📍 981 East Pittsburgh Street Greensburg, PA 15601-3518  
724-832-3888 (does not except Antifreeze)  
📍 787 Magill Drive North Huntingdon, PA 15642  
724-864-6441  
Used motor oil/oil filters  
Antifreeze

Johnson's Gun Depot  
2231 Mt. Pleasant Road, Norvelt, PA 15674  
724-423-1100  
Ammunition

Junk Be Gone  
2833 Route 66 at Story Rd, Export PA 15632  
724-468-3443  
Scrap Metals  
Computers \$  
Freon Appliances \$  
Televisions \$  
Propane Tanks  
Vehicle Batteries-free

Kmart (all locations)

- ♻️ 780 Rostraver Road Belle Vernon, PA 15012  
724-929-3040
- ♻️ 200 Mt. Laurel Plaza Latrobe, PA 15650  
724-537-7823
- ♻️ 451 Hyde Park Road Leechburg, PA 15656  
724-845-6051
- ♻️ 100 Crossroads Plaza Mt. Pleasant, PA 15666  
724-547-2700
- ♻️ 100 Tarentum Road New Kensington, PA 15068  
724-337-6511

All rechargeable batteries and cell phones

Kiducation/Community Crusade for Children, Inc.

Phone: 203-789-1162

- ♻️ Busy Beaver  
8800 Norwin Avenue Irwin, PA 15642
- ♻️ Riverview Homes  
595 Route 119 South Greensburg, PA 15601
- ♻️ Vincent's Pizza Plaza  
8871 Route 30 Irwin, PA 15642
- ♻️ Westmoreland Mall (near Sears Automotive Parking Lot)  
5256 Route 30 East Greensburg, PA 15601

<http://kiducation.org/index.php/home>

Used and unwanted clothing and shoes; look for the white collection box with the big yellow "Pencil"

Kiski Valley Auto Parts/NAPA

2841 River Road Vandergrift, PA 15690

724-568-3602

Vehicle batteries (with purchase of new one)

Used motor oil

L & L Quik Lube

102 Depot Street Latrobe, PA 15650

724-537-9329

Used motor oil

Latrobe Tool Service (DeWalt Factory Store)

4339 Route 30 Latrobe, PA 15650

724-532-1411

Call2Recycle Battery Recycling: all rechargeable batteries and cell phones

All NiCad Batteries (power tools, rechargeable)

Small Lead Acid Batteries

Lenscrafters

Westmoreland Mall 5256 SR 30 Suite 235 Greensburg, PA 15601

724-834-9229

Used Eyeglasses

Ligonier Auto Parts/NAPA

324 East Main Street Ligonier, PA 15658

724-238-9566

Vehicle batteries

Used Motor Oil

Lowe's Home Improvement Warehouse (all locations)

- ♻️ 200 Sara Way Belle Vernon, PA 15012  
724-930-7000
- ♻️ One Hempfield Square Greensburg, PA 15650  
724-853-6950
- ♻️ 200 Colony Lane Latrobe, PA 15650  
724-532-8360

Plastic bags & film plastic, CFLs; Christmas lights

Call2Recycle Battery Recycling: all rechargeable batteries and cell phones

Plastic Plant Pots (includes pots, trays and tags); drop-off in garden center

Mangery & Sons of Penn, Inc.

900 South Railroad Street, Penn, PA 15675

724-527-0955

Scrap metal processing

Mastrococco's Market

133 East First Avenue Derry, PA 15627

724-694-2788

Plastic grocery bags

Mother of Sorrows Church, the Narthex

4200 Old William Penn Highway, Murrysville, PA 15668

724-733-8870

Household batteries

Mr. Tire Auto Service Centers

- ♻️ 4096 Lincoln Highway/Rt. 30 Latrobe, PA 15650  
724-539-9200
- ♻️ 806 South Center Avenue, New Stanton, PA 15672  
724-925-6482
- ♻️ 81 Arona Road North Huntingdon, PA 15642  
724-863-7773

Used motor oil/antifreeze

Vehicle batteries

Tires \$

Mt. Pleasant Auto Parts/NAPA

1688 Mt. Pleasant-Connellsville Road Mt. Pleasant, PA 15666

724-547-5717

Vehicle batteries

Used Motor Oil

Mullen Refrigeration Service

202 Railroad Street Latrobe, PA 15650

724-537-7203

Freon removal (in shop only)

Murray Automotive Electric

- ♻️ 4623 Route 30 Latrobe, PA 15650  
724-539-3199
- ♻️ 7240 Rt. 22 Greensburg, PA 15601  
800-322-1271/724-668-2100

Batteries all types (vehicle, lead acid, rechargeable, household)

NAPA Auto Parts of Latrobe

1102 Jefferson Street Latrobe, PA 15650

724-537-5501

Vehicle batteries

Used Motor Oil

Pep Boys (all locations)

- ♻️ 1125 East Pittsburgh Street Greensburg, PA 15601  
724-850-9966
- ♻️ 4360 William Penn Highway Murrysville, PA 15668  
724-387-2839
- ♻️ 12043 Lincoln Way North Huntingdon, PA 15642  
724-863-5119

Vehicle batteries  
Automotive fluids  
Tires \$

Perry Scrap Metals

Railroad & Robertson Streets West Newton, PA 15089  
724-872-9444  
Scrap Metal

Planet Aid, Inc.

616H Beatty Road Monroeville, PA 15146  
412-373-0436

[http://www.planetaid.org/index.php?p=1\\_74\\_Pittsburgh-PA](http://www.planetaid.org/index.php?p=1_74_Pittsburgh-PA)

Clothing, textiles, shoes and books. Look for Planet Aid's yellow drop-off boxes. Check website for nearest drop-off box.

Rite-Aid (all locations)

- ♻️ 314 East Pittsburgh Street, Greensburg, PA 15601  
Phone: 724-834-0960
- ♻️ 685 North Main Street, Greensburg, PA 15601  
Phone: 724-837-4164
- ♻️ 6090 Route 30, Greensburg, PA 15601  
Phone: 724-837-4180
- ♻️ 621 Clay Ave. Jeannette, PA 15644  
Phone: 724-527-3888
- ♻️ 8775 Norwin Ave. North Huntingdon, PA 15642  
Phone: 724-863-9074
- ♻️ 1008 Latrobe Thirty Plaza, Latrobe, PA 15650  
Phone: 724-529-3353
- ♻️ 304 Depot Street, Latrobe, PA 15650  
Phone: 724-532-3219
- ♻️ 3550 Route 130, Irwin, PA 15642  
Phone: 724-744-15642

Unwanted prescription and over-the counter medications (no sharps or controlled substances)-  
purchase postage paid envelopes to a proper disposal company

Ross Appliance & Sweeper Company

8871 SR 30 North Huntingdon, PA 15642  
724-864-3700

Freon Removal w/ unit disposal \$ (in-home or drop-off)

St. Vincent DePaul Thrift Stores

- ♻️ Corner of Jefferson & Chestnut St, Latrobe, PA 15650 **\*\*NEW LOCATION\*\***  
(724) 537-0411
- ♻️ 126 S Main St, Greensburg, PA 15601  
(724) 836-1077

Household items  
Clothing

Salvation Army Family Stores

- ♻️ Rt. 30 West, Latrobe, PA 15650
- ♻️ 12751 Rt. 30, Irwin, PA 15642
- ♻️ For Free Pickup of Donations call 1-800-SA-TRUCK

Clothing, furniture, household goods, sporting equipment, books, electronics and much more

Sam's Club

6211 Route 30 Greensburg, PA 15601  
724-850-7490  
All rechargeable batteries and cell phones

Schade's Auto Repair

508 US Route 30 Irwin, PA 15642  
724-863-5788  
Used motor oil

Sears Automotive

5256 SR 30, Westmoreland Mall Greensburg, PA 15601  
724-830-1395

Vehicle batteries

Tires \$

Automotive fluids: motor oil, antifreeze

Batteries – rechargeable (power tools)

Shop N Save (all locations)

- ♻️ 207 Athena Drive Delmont, PA 15626  
724-468-5352
- ♻️ 990 North Main Street Greensburg, PA 15601  
724-834-5714
- ♻️ 730 East Pittsburgh Street Greensburg, PA 15601 (Davis Shopping Ctr.)  
724-834-4470

Plastic grocery bags

Smith Auto Parts/NAPA

108 North Broadway Avenue Scottdale, PA 15683  
724-887-6500  
Vehicle batteries  
Used motor oil

Stanko Products/ Dens-A-Can

278 Donohoe Road Greensburg, PA 15601  
724-834-8080  
Aluminum cans

Staples (all locations)

- ♻️ 796 Tri County Plaza, 800 Rostraver Road Belle Vernon, PA 15012  
724-929-5020
- ♻️ 6207 Route 30, Hempfield Plaza Greensburg, PA 15601  
724-838-7380
- ♻️ 100 Tarentum Bridge Road New Kensington, PA 15068  
724-337-1855

Electronics: desktops, laptops, monitors, printers, shredders, UPS devices, computer peripherals, mobile phones, GPS, digital cameras, cell phones; all brands accepted; limit of 6 items per customer per day;

Not accepted: televisions, appliances, floor model copiers, stereo equipment, alkaline batteries, and certain other household electronics.

Ink and toner cartridges: Receive \$2 Staples Reward per cartridge®

All rechargeable batteries



Supreme Parts of Saltsburg/NAPA  
532 Salt Street Saltsburg, PA 15681  
724-639-3508  
Vehicle batteries  
Used motor oil

Target (all locations)

- ♻️ 6206 SR 30 Greensburg, PA 15601  
724-853-7440
- ♻️ 8931 SR 30 North Huntingdon, PA 15642  
724-863-5397

[www.target.com/eco-friendly](http://www.target.com/eco-friendly)

Plastic Grocery Bags  
Aluminum cans, glass, #1 & #2 beverage bottles  
Ink cartridges  
Personal Electronics: cell phones, MP3 players

The UPS Store (all locations)

- ♻️ 645 East Pittsburgh Street Greensburg, PA 15601  
724-850-6245
- ♻️ 4889 William Penn Highway Murrysville, PA 15668  
724-387-1313
- ♻️ 8701 Lincoln Way North Huntingdon, PA 15642  
724-864-4670

Styrofoam Packing Peanuts  
Bubble Wrap

Verizon Wireless

- ♻️ 1185 East Pittsburgh Street Greensburg, PA 15601  
724-836-2440
- ♻️ Route 30 East Greensburg, PA 15601  
724-830-9900

All rechargeable batteries and cell phones

Walgreens (all locations)

- ♻️ 1000 Lincoln Place, Greensburg, PA 15601  
Phone: 724-850-8191
- ♻️ 827 MaGill Drive, North Huntingdon, PA 15642  
Phone: 724-861-7201
- ♻️ 12119 Route 30, North Huntingdon, PA 15642  
Phone: 724-978-7290
- ♻️ 2801 Sharkys Lane, Latrobe, PA 15650  
Phone: 724-539-8467
- ♻️ 4667 William Penn Hwy, Murrysville, PA 15668  
Phone: 724-325-3478
- ♻️ 108 Greensburg Rd, Lower Burrell, PA 15068  
Phone: 724-339-1473

Unwanted prescription and over-the counter medications (no sharps or controlled substances)-  
purchase postage paid envelopes to a proper disposal company

Walmart Supercenter #2420  
100 Sara Way Belle Vernon, PA 15012  
724-929-2424

All rechargeable batteries and cell phones  
Plastic grocery bags  
Used motor oil  
Vehicle batteries  
Tires \$

Walmart Supercenter #3228  
6700 Hollywood Boulevard Delmont, PA 15626  
724-468-6274  
Plastic Grocery Bags  
Vehicle batteries (with purchase of new one)  
Used Motor Oil

Walmart Supercenter #2059  
2200 Greengate Centre Boulevard Greensburg, PA 15601  
724-830-2440  
All rechargeable batteries and cell phones  
Used motor oil  
Tires \$  
Vehicle batteries (with purchase of new one)  
Plastic grocery bags

Walmart Supercenter #2502  
100 Colony Drive Latrobe, PA 15650  
724-537-0928  
All rechargeable batteries and cell phones  
Plastic Grocery Bags  
Vehicle batteries (with purchase of new one)  
Used Motor Oil

Walmart Supercenter #2611  
2100 Summit Ridge Plaza Mt. Pleasant, PA 15666  
724-547-7300  
All rechargeable batteries and cell phones  
Used motor oil  
Vehicle batteries  
Tires \$  
Plastic grocery bags

Webster Auto Wreckers  
Rt. 906 Webster, PA 15089  
724-379-5595  
Scrap metal, vehicles

Weimer's Iron & Scrap Metals  
5639 Tunnelton Road Saltsburg, PA 15681-9801  
724-459-6694  
Scrap Metal

**Westmoreland Cleanways Recycling Center**

113 Innovative Lane (Building F) (724) 879-4020  
Latrobe, PA 15650-5462  
Mon: Noon -7 p.m.; Wed & Fri: 8 a.m. -1 p.m.; 2<sup>nd</sup> Saturday of each month 8:30 a.m. -Noon  
[www.westmorelandcleanways.org](http://www.westmorelandcleanways.org)  
See P. 4 for details

Wireless Zone  
4887 William Penn Highway Murrysville, PA 15668  
724-325-0062  
All rechargeable batteries and cell phones

YWCA Thrift Store  
♻️ 221 South Maple Avenue Greensburg, PA 15601  
724-834-4339  
♻️ 424 Main Street Irwin, PA 15642  
724-864-3100

Household items  
Clothing

## RECYCLING DEFINITIONS

*Following are some definitions used in the recycling and solid waste industry that you may find useful and sometimes amusing.*

Act 101: Pennsylvania's recycling law passed in 1988; defines which municipalities, businesses and institutions must recycle, what materials are considered recyclable, and consequences of non-compliance.

Act 108 of 2010: Covered Device Recycling Act: bans certain electronic waste from landfill disposal. Covered devices include computers, monitors and peripherals, laptops, and televisions.

Act 140: Passed in 2006, further defines and strengthens provisions of Act 101.

Aluminum can: beverage container made from aluminum

Aseptic containers: the multi-layer plastic, paper and metal packaging that usually contains [juice](#), soy milk and other liquids.

Baler: a machine that compacts certain waste materials into rectangular bundles to reduce volume and to aid in transporting.

Bauxite: Claylike amorphous material, the main ore for the production of aluminum

Bi-metal can: a can made from 2 or more metals, usually a steel body and aluminum lid

Biodegradable: Capable of being converted into basic compounds or elements by bacteria

Bulk Goods: Refers to household appliances (washers, dryers, refrigerators, etc.). The salvage industry extracts valuable metals from these items. Also see WHITE GOODS

Commingled Recycling: The pick-up of several recyclable materials mixed together; usually does not include fiber. May include plastic, glass, and metal containers.

Commodity: A recyclable material with economic value.

Contaminant: A material that is harmful to the recycling process or that destroys the value of the recyclable material.

Construction Waste (also Construction and Demolition, or C&D): Waste material produced in the construction of homes, buildings, etc. Includes lumber, metal, sheet rock. Clean C&D can be recycled. C&D from old building demolition cannot be recycled. Must be taken to a permitted C&D facility to ensure recycling.

Covered Devices Recycling Act (CDRA): see Act 108 of 2010

Cullet: Scrap glass, usually broken in to small uniform pieces. This is how glass is typically marketed for resale/recycling.

Curbside Collection: Collection of recyclables or trash directly from a resident's home.

De-inking: Process of removing inks and dyes from printed paper for use in making new paper.

Dirty MRF: Material recovery facility where recyclables are removed from municipal solid waste.

Diversion: Finding other means of disposing waste rather than landfilling, such as recycling, reusing, or composting.

Drop-off Recycling: System where recyclables are collected at a central location in a community, typically for use by the general public.

Extended Producer Responsibility (EPR): A movement to put the responsibility (and cost) for recycling and/or proper disposal of a material onto the manufacturer. This is a growing trend in other countries, and in some industries such as electronics.

Ferrous Metals: Metals with iron content; a magnet will stick to ferrous metal.

Fiber: Refers to any paper or paper-like stock made from plant material. Includes cardboard, fiberboard, chipboard, office paper, kraft paper, newsprint, glossy paper, and similar materials. Usually collected separately from other types of recyclable material. See COMMINGLED RECYCLING

Food Waste: Household or restaurant table scraps; Produce left over or otherwise not suitable for sale by grocery stores, markets, etc.

Food and beverage containers: Containers made from plastic, glass or metal for storing food and beverages.

Gaylord box: Reusable corrugated (or other construction) container for storing and transporting recyclables. Typically 4' square; can be moved on a pallet.

Heavy Metals: Metals such as cadmium, lead, and mercury that are persistent in the environment and are poisonous. Heavy metals are found in all electronics; thus the need for proper handling and disposal.

Household Hazardous Waste (HHW): Waste material generated in a household that may cause or contribute to human illness and/or environmental damage if not managed properly.

Junk: Residential or commercial waste having no apparent commercial value.

Leaf Waste: Leaves, garden residue, shrubbery and tree trimmings; does NOT include grass clippings. Leaf waste is BANNED from being disposed in landfills by PA Act 101; must be collected through a curbside collection in all mandated municipalities.

Mandatory recycling: Recycling program required by PA Act 101.

Mixed Paper: Category of waste paper that typically includes newsprint (black & white and color inserts), office paper, junk mail, magazines/catalogs, and telephone books.

Mobius: A mobius loop is the symbol often referred to as the recycling symbol. It consists of three arrows pointing at each other, forming a type of triangle. The concept is that the cycle of natural resources has no beginning and no end.

Municipal Solid Waste (MSW): That category of waste produced by consumers; generated in households, offices, lunchrooms, institutions. DOES NOT include manufacturing or industrial waste or scrap.

Non-ferrous Scrap Metal: Metals that contain no iron; not magnetic. Ex: aluminum, brass, copper, etc.

OCC: Old Corrugated Cardboard

Organic Waste: Any waste derived from plant or animal tissue. May include paper, wood, food and yard waste.

Pallets (or skids): roughly 4' x 4' wooden platforms used for shipping. Can be re-used until broken; can be chipped for mulch if clean; make excellent multi-bin compost bins.

Pay-As-You-Throw (PAYT): Also called bag system or sticker system. PAYT programs charge residents for waste removal services based on the quantity of material discarded. Theoretically, PAYT encourages people to recycle and reduce their waste, because the more material that is recycled or otherwise removed from the waste stream, the lower the waste bill.

Plastics: Man-made material derived from fossil fuel. See Resin Code Chart on P. 7 for commonly used grades of plastic.

Pre-Consumer Waste: Waste material generated through the manufacturing process (such as printer scrap, metal shavings, defective pieces that are not used as a finished product, and the like).

Post-Consumer Waste: Materials that have been discarded by the buyer or consumer, as opposed to leftovers or scrap from industrial or manufacturing processes (see PRE-CONSUMER WASTE).

Rare Earth Metals: are a set of seventeen [chemical elements](#), specifically the fifteen [lanthanides](#) plus [scandium](#) and [yttrium](#), that contain unique properties that have enabled the miniaturization of electronic components including capacitors, lasers and powerful magnets.

Recyclable Material: Any material that can be remade into another product.

Recycle: To transform a waste material for use as an ingredient to manufacture another product.

Re-use: To use a waste product over again or for another purpose (without changing its form).

Recycled Content: The percentage of waste material used in the manufacture of a new product as compared to virgin content.

Residual Waste: Non-hazardous industrial waste that sometimes requires special handling, as opposed to municipal solid waste.

Sanitary Landfill: Site that has been specially prepared for the disposal of solid waste, to avoid contamination of surrounding land, water and air.

Single Stream Recycling: The pickup of all recyclables, regardless of type. May include plastic, glass, metal, fiber, and aseptic containers.

Solid Waste Management (SWM): Science of planning for, collection, storage, recycling and/or proper disposition of waste.

Sorted Office Waste Paper: Category of paper generally produced in offices to include white office paper, ledger and computer paper.

Steel can: Food or beverage container made of steel; lined with tin plate or sometimes plastic to prevent corrosion and contamination of food.

Sustainable Packaging: Industry movement working across the supply chain to design product packaging with a view toward reduction, re-use, and recyclability.

Tin can: Can made of steel with a tin liner.

Transfer Station: Facility where waste materials from smaller collection vehicles can be taken and transferred to larger transport containers for shipment to landfill or processing center.

UBC: Used beverage container

Virgin Material: Also primary or raw material: New material used for manufacturing basic products (wood pulp, iron ore, silica, bauxite).

Waste Reduction: The prevention of waste at its source by reducing consumption, packaging or other method.

Waste Stream: The material output of an area, location, or facility (i.e. our business's waste stream contains 50% paper that can be recycled).

White Goods: Generally refers to major appliances such as stoves, refrigerators, washers, etc.

Waste-to-Energy: The process of creating energy in the form of electricity or heat from the incineration of waste.

Yard Waste: See LEAF WASTE

#### **DISPOSING OF GENERAL PURPOSE & ALKALINE BATTERIES**

Following is information directly from Duracell's website (11/10):








“Alkaline batteries can be safely disposed of with normal household waste. Never dispose of batteries in fire because they could explode.

Due to concerns about mercury in the municipal solid waste stream, we have voluntarily eliminated all of the added mercury from our alkaline batteries since 1993, while maintaining the performance you demand. Our alkaline batteries are composed primarily of common metals—steel, zinc, and manganese—and do not pose a health or environmental risk during normal use or disposal.

It is important not to dispose of large amounts of alkaline batteries in a group. Used batteries are often not completely "dead." Grouping used batteries together can bring these "live" batteries into contact with one another, creating safety risks.

Proven cost-effective and environmentally safe recycling processes are not yet universally available for alkaline batteries. Some communities collect alkaline batteries for recycling—contact your local government for disposal practices in your area.”

## PLASTIC RESIN CODES

Resin Code	Definition
	<p><b>1 = PETE (or PET)</b>  <b>polyethylene terephthalate</b>            Commonly used to package soft drinks, water, beer, juice, sports drinks and other beverages, as well as edible oils, salad dressing, peanut butter, various condiments and sauces, and non-food products like household cleaners and personal products.</p>
	<p><b>2 = HDPE</b>  <b>high density polyethylene</b>            Commonly used for milk, cider and water jugs, as well as detergent, fabric softener and bleach.</p>
	<p><b>3 = V</b>  <b>vinyl/polyvinyl chloride (PVC)</b>            Often used for salad dressing bottles, vegetable oil bottles and mouthwash.</p>
	<p><b>4 = LDPE</b>  <b>low density polyethylene</b>            Used for flexible bags for dry cleaning, trash, produce, bread and shrink wrap. Recycled LDPE is often used to make grocery bags.</p>
	<p><b>5 = PP</b>  <b>polypropylene</b>            Usually found in drinking straws, battery cases, some dairy tubs, bottle labels and caps.</p>
	<p><b>6 = PS</b>  <b>polystyrene</b>            Commonly used for materials like packaging peanuts, plastic utensils, meat and egg trays.</p>
	<p><b>7 = OTHER</b>  <b>other</b>            Other plastics are often made of multiple resins or layers of different types of plastics. These may include microwavable packages, snack bags and industrial plastics.</p>

## HOW TO PROPERLY DISPOSE OF LATEX AND OIL-BASED PAINT

What to do with left-over paint is one of the most popular questions asked of Westmoreland Cleanways. Following are some general guidelines for proper disposal of the material:



- Any paint, latex or oil-based, that has dried and hardened in the can may be thrown away with the normal trash. Any can with less than one inch of liquid may be thrown away in the normal trash.
- Latex paint is considered non-hazardous and can be dried and thrown away with normal household trash. One effective method involves pouring the paint over an absorbent substance, such as clay-based cat litter or shredded newspaper. Let the cat litter or newspaper dry, put it in a plastic bag and throw away. Let the cans dry and put them in the trash with the lids removed.
- A paint hardener such as “Krud Kutter Waste Paint Hardener,” can be used to dry and dispose of latex and oil-based paint. Many such products are a powder which is poured directly into the paint. Once the paint hardens it can be thrown away with your normal trash. A variety of paint hardeners can be found at local paint retailers.
- If a product like Krud Kutter is not used, oil-based paint is considered hazardous and should be disposed at a household hazardous waste collection event.

### How Much Paint Do I Really Need?

The most effective way to reduce the amount of paint for disposal is to purchase only the amount you need to complete the job. To determine the amount of paint you will need, first determine the square footage to be painted, and then divide that by the number of square feet a gallon of paint will cover (approximately 400 sq. ft.). For example, how much paint would be needed using two coats of paint for a 12 foot by 15 foot room with an 8 foot ceiling, one door, and two windows?

- 1) Measure the total distance (perimeter) around the room  $(12 \text{ ft.} + 15 \text{ ft.}) \times 2 = 54 \text{ ft.}$
- 2) Multiply the perimeter by the ceiling height to find the total wall area:  $54 \text{ ft.} \times 8 \text{ ft.} = 432 \text{ sq. ft.}$
- 3) Subtract the square feet of the doors (usually 21 square feet) and the windows (15 square feet each for this example) from 432 sq. ft. (which we determined to be the total wall area):  $432 - 21 \text{ sq. ft. (doors, } 1 \times 21) - 30 \text{ sq. ft. (windows, } 2 \times 15) = 381 \text{ sq. ft.}$  The total square footage to be painted is 381 sq. ft.
- 4) Multiply that by the number of coats needed,  $2 \times 381 \text{ sq. ft.} = 762 \text{ sq. ft.}$
- 5) Generally, one gallon of paint will cover 400 square feet. (However, coverage is affected by the texture of the surface and quality of the paint).  $762 \text{ sq. ft.} / 400 \text{ sq. ft.} = 1.9$  gallons of paint.



## WEBSITES OF INTEREST

A Bag's Life – Everything you need to know about recycling plastic bags  
<http://abagslife.com>

American Forest & Paper Association  
<http://www.afandpa.org/>

Arm & Hammer Baking Soda – Many Uses  
<http://www.armandhammer.com/solutions.aspx>

Art Projects Using Junk and Recyclable Stuff  
<http://oldjunkcar.com/art-junk-recycled-craft-ideas/>

Association of Post-Consumer Plastic Recyclers  
<http://www.plasticsrecycling.org/>

Find Government Offices in your County  
<http://www.countyoffice.org/>

Curbside Value Partnership  
“Connecting public-private partnerships for stronger recycling”  
[www.recyclecurbside.org/](http://www.recyclecurbside.org/)

Earth 911  
<http://earth911.com/>

Great American Cleanup of PA  
[www.gacofpa.org](http://www.gacofpa.org)

GreenWorks – Naturally Derived Cleaners  
[www.greenworkscleaners.com](http://www.greenworkscleaners.com)

ISRI - Institute of Scrap Recycling Industries, Inc.  
<http://www.isri.org>

Keep American Beautiful  
[www.kab.org](http://www.kab.org)

Keep Pennsylvania Beautiful (formerly PA CleanWays)  
[www.keeppabeautiful.org](http://www.keeppabeautiful.org)

NAPCOR - National Association for PET Container Resources  
<http://www.napcor.com/PET/index.html>

Northeast Recycling Council (find an economic benefits calculator to determine your carbon footprint)  
[www.nerc.org](http://www.nerc.org)

PA Department of Environmental Protection Recycling Homepage  
<http://www.dep.pa.gov/Citizens/RecyclingDisposal/Pages/default.aspx#.VoK9IFlbytN>

Planet Green – Fund Raising Recycling Programs  
<http://planetgreenrecycle.com/index.php>

PROP - Professional Recyclers of Pennsylvania  
[www.proprecycles.org](http://www.proprecycles.org)

Repurposed Materials, Inc.- “Recycling by Repurposing”  
<http://www.repurposedmaterialsinc.com>



Seventh Generation – Natural Cleaning Products  
[www.seventhgeneration.com](http://www.seventhgeneration.com)

Smart 2 B Green – Simple Steps to Greener Living  
[www.smart2begreen.com](http://www.smart2begreen.com)

Steel Recycling Institute  
<http://www.recycle-steel.org/>

TerraCycle – Fund Raising Recycling Programs  
<http://www.terracycle.net/>

Best Buy Trade In- Estimate your Electronic Gadget Trade in Value  
<http://toshiba.eztradein.com>

US Environmental Protection Agency  
<http://www.epa.gov/>

Waste Management – Think Green From Home  
<https://www.thinkgreenfromhome.com/Products.cfm>

Westmoreland Cleanways and Recycling  
[www.westmorelandcleanways.org](http://www.westmorelandcleanways.org)

## NOTES



Westmoreland Cleanways and Recycling  
128 Innovative Lane, Suite 2000  
Latrobe, PA 15650-5462  
Phone: 724-879-4020  
Fax: 724-879-8576  
Email: [info@westmorelandcleanways.org](mailto:info@westmorelandcleanways.org)  
[www.westmorelandcleanways.org](http://www.westmorelandcleanways.org)

## WESTMORELAND CLEANWAYS AND RECYCLING WHAT WE'RE ALL ABOUT

Westmoreland Cleanways and Recycling is a nonprofit 501(c)(3) organization whose mission is to protect, restore and maintain the environmental qualities of our county for the benefit of all who live, work, and visit herein.

Westmoreland Cleanways and Recycling accomplishes its mission by sponsoring and promoting programs that address the proper disposal of solid waste through recycling, special collections, and the cleanup of illegal dumpsites and littered areas. We educate the public (both youth and adult audiences) through presentations, print media, and the web.

Westmoreland Cleanways and Recycling initiates and facilitates programs by bringing together a network of volunteers, industry leaders, and state and local government representatives to provide services in the most efficient and economical manner.

Westmoreland Cleanways and Recycling is funded by the Westmoreland County Commissioners, membership fees, private donations, sponsorships and grants. Volunteers are the backbone of the organization, donating time, energy, and expertise to carry out its mission.

To learn more about how you can participate in Westmoreland Cleanways' mission, visit us on the web at [www.westmorelandcleanways.org](http://www.westmorelandcleanways.org), or call 724-879-4020.

~~~~~

### MEMBERSHIP INFORMATION

We hope you enjoyed our Recycling Guide. To support our activities, please become a member. Return this coupon and your payment to Westmoreland Cleanways, 128 Innovative Lane Suite 2000 (Building E) Latrobe, Pa 15650-5462

Date \_\_\_\_\_

Name: \_\_\_\_\_

Address: \_\_\_\_\_

City \_\_\_\_\_ Zip+4 \_\_\_\_\_

County: \_\_\_\_\_

Phone: (h) \_\_\_\_\_ (w) \_\_\_\_\_

Email: \_\_\_\_\_

Individual \$5

Family \$15

Organization/Business \$25

Municipal \$25

Corporation \$100

Lifetime Individual \$100

Lifetime Family \$300

Lifetime Corporate \$500

Additional contributions are greatly appreciated.

**Memberships and contributions are tax deductible, as defined by law**

WE DO NOT SHARE OR SELL OUR MAILING LIST